



The U.S. Navy's
MILITARY SEALIFT COMMAND

■ ■ ■ ■ 2024
IN REVIEW



msc.usff.navy.mil

UNITED WE SAIL



The U.S. Navy's Military Sealift Command



Mission: Empower Global Warfighting Effectiveness

Military Sealift Command exists to support the joint warfighter across the full spectrum of military operations. MSC delivers agile logistics, strategic sealift, as well as specialized missions anywhere in the world, under any conditions, 24/7, 365 days a year.

Vision: United We Sail

MSC executes no-fail sustainment and service support missions for warfighters across the globe. Our ships are ready and crews trained to fully integrate with Fleet and Joint Forces in contested environments.

This Department of Defense publication is an authorized publication for members of the DoD. Contents of the 2024 In Review are not necessarily the official views of, or endorsed by, the U.S. Government, the DoD, or the U.S. Navy. The editorial content of this publication is the responsibility of the Commander, Military Sealift Command Congressional and Public Affairs Office. Questions about the 2024 In Review may be sent to: msc_n02p@us.navy.mil.

2024 In Review

TABLE OF CONTENTS

INTRODUCTION

- 2 Commander's Perspective
- 4 Global Maritime Campaign Plan
- 5 Chain of Command
- 6 Organizational Structure
- 7 Area Commands
- 9 MSC Reserves

MISSION AREAS

- 10 Combat Logistics Force
- 15 Special Mission
- 17 Prepositioning and Seabasing
- 20 Fleet Support
- 26 Dry Cargo and Tankers
- 28 Ships of MSC

AREA COMMANDS

- 30 MSC Atlantic
- 34 MSC Pacific
- 38 MSC Europe and Africa
- 41 MSC Central
- 44 MSC Far East

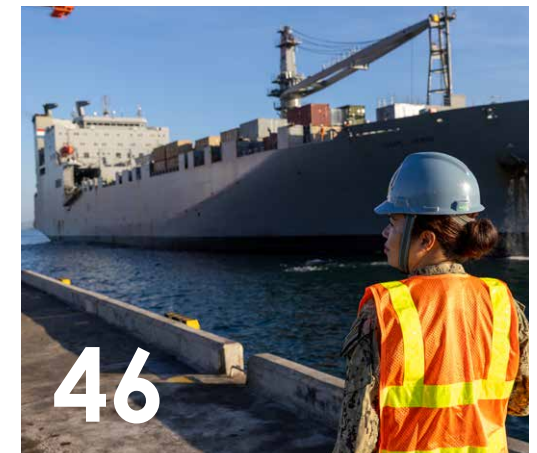
APPENDICES

- 48 Expenses and Costs
- 49 Mission Highlights
- 50 Exercise Participation
- 52 Awards
- 55 Personnel
- 56 75th Anniversary



18

Expeditionary Sea Base
The Navy's first purpose-built afloat forward staging base



46

Exercise Balikatan 24
A longstanding annual exercise between the Armed Forces of the Philippines and U.S. military



33

USNS Supply
Crew receives Navy Unit Commendation Award

Commander's Perspective

Rear Adm. Philip E. Sobeck, USN
Commander, Military Sealift Command



As the Department of Defense’s maritime logistics provider, Military Sealift Command delivers agile, persistent, and innovative logistics solutions to the Navy and Joint Force, generating effects across the spectrum of military operations in strategic competition, crisis, and conflict.

Directly supporting Navy Fleet Commanders and as the Naval Component of United States Transportation Command, we crew, train, equip, and operate over 140 government and commercially-owned and chartered vessels for the Department of Defense and other agencies.

The MSC fleet includes cargo vessels, tankers, naval auxiliaries, sealift, and a variety of special mission ships. We are underway worldwide to serve joint warfighters and call on ports in every continent, including Antarctica.

Over the past year, we developed and are now executing a Global Maritime Campaign Plan (GMCP), that drives our operational and business models and maritime application of global response for our support to logistics and sustainment. This plan will bring us to our desired end state:

To be prepared for and successfully execute assigned missions in a contested logistics environment at the time, scale, and pace required by the Navy and Joint Force in a high-end conflict.

In addition, we are implementing a workforce initiative to address Civil Service Mariner recruitment and retention challenges. The initiative includes crew reassignments to higher priority vessels and the placement of some MSC logistics support ships into extended maintenance periods. Rotating crews to higher priority vessels will minimize overdue reliefs and provide a more predictable work environment for Civil Service Mariners.

We remain focused on our priorities which provide the foundation to execute the GMCP:

- Mission Assurance:** Man, train, and equip the MSC Fleet to enable mission execution from competition through escalation to armed conflict.
- Warfighting Effectiveness:** Develop, resource, and integrate workforce, capabilities and force structure to execute mission at scale and pace required in combat.
- Workforce Resiliency and Safety:** Sustain the high standards of professionalism and safety while promoting a diverse and talented workforce.
- Drive Decision Advantage:** Develop and sustain data analytics and information sharing that enables enterprise-wide collaboration and agile decision making.

Here are a few highlights of the work the MSC team completed around the globe in support of the Navy and Joint Force over the past year:

- Fleet support ship USNS Grasp conducted towing missions during Rim of the Pacific 24; USNS Mercy and the Military Treatment Facility team completed the 19th iteration of Pacific Partnership; and expeditionary fast transport USNS Burlington supported humanitarian civic assistance mission Continuing Promise throughout the Caribbean, Central and South America.
- MV Roy Benavidez, USNS 1ST LT Baldomero Lopez, and USNS GYSGT Fred W. Stockham carried heavy equipment and material needed to construct and support a temporary pier to enable the flow of multinational humanitarian aid into Gaza.



- Our combat logistics force ships supported the training and deployment of carrier and expeditionary strike groups enabling the Navy’s forward presence mission; and ships USNS Kanawha, USNS Supply, USNS Alan Shepard, USNS Amelia Earhart, and USS Lewis B. Puller were awarded the Navy Unit Commendation award for supporting combat operations in the Red Sea and surrounding waters.
- Our sealift missions resupplied McMurdo Station in Antarctica and Pituffik Space Base, Greenland, and conducted the strategic movement of U.S. Army equipment around the Pacific during Operation Pathways, and to and from Europe supporting Atlantic Resolve.
- We accepted delivery of three ships, fleet oiler USNS Earl Warren, expeditionary fast transport USNS Cody, and expeditionary seabase USNS Robert E. Simanek; and christened four ships: towing, salvage and rescue ship USNS Cherokee Nation, expeditionary fast transport USNS Point Loma, and fleet oilers USNS Robert F. Kennedy and USNS Lucy Stone.

The MSC team continued to innovate and seek solutions to maritime logistics challenges, pressing forward with consolidated cargo replenishment operations and afloat storage tanker operations, demonstrating an expeditionary vertical launch system capability, and deploying Navy Reserve Corps Officers as Tactical Advisors aboard both government-owned, and commercially-owned vessels on charter.

Despite dangers and long separations from home, our U.S. Merchant Mariners sail in harm’s way to ensure that American warfighters and our allies have the supplies needed to prevail. I am proud of our 5,500 Civil Service Mariners who crew and sail government ships as we execute national security missions every day.

During the past year, we celebrated the 75th anniversary of Military Sealift Command. Stood up in 1949, MSC, then called Military Sea Transportation Service, became the single managing agency for the Department of Defense ocean transportation needs. MSC has been present during every major conflict since World War II, providing vital logistics and operational support to the U.S. Navy and Joint Force around the globe.

Our government team, ashore and afloat, and commercial partners, past and present, can take great pride in having contributed to this impressive 75-year legacy. Commemorating our history allows us to reflect on our past achievements, and as we celebrate, we are also focused on our no-fail mission of sustainment and support to the warfighter for the next 75 years.

United We Sail!

Rear Adm. Philip E. Sobeck, USN
Commander, Military Sealift Command

Global Maritime Campaign Plan

2024-2026

Global Maritime Campaign Plan Objectives

- 1
- Dynamic, prioritized, and scalable enterprise force development and force generation model that supports planned and emergent requirements in peacetime and in potential conflicts
- 2
- Appropriate authorities to (re)assign, (re)allocate, (re)prioritize, and employ capabilities to meet global support requirements
- 3
- Effective manning model that enables delivery of skilled, trained personnel at capacity required to execute the breadth of MSC missions
- 4
- Responsive operational and administrative C2 to maneuver and sustain forces in a Denied, Disrupted, Intermittent, Limited (DDIL) environment
- 5
- Financial management construct that timely aligns resources to execute missions in accordance with planned and emergent operational requirements of supported commanders

To be prepared for and successfully execute assigned missions in a contested environment at the time, scale, and pace required by the Navy and Joint Force in a high-end conflict

MSC Command Priorities

Mission Assurance

- **Man, train, and equip** the MSC Fleet to enable mission execution from competition through escalation to armed conflict.
- Advocate for and **deliver personnel and platform readiness and sustainment** at sufficient breadth and depth required of near-term force generation and employment, longer-term force development.

Warfighting Effectiveness

- **Develop, resource, and integrate workforce, capabilities and force structure** to execute mission at scale and pace required in combat.
- Implement enhanced tactics, techniques, procedures and **leverage partnerships and technologies** integral to MSC contributions to Navy, Joint, and Allied logistics in contested operations.
- Execute effective planning, employment, and C2 of forces assigned as Navy Component to USTC.

Workforce Resiliency and Safety

- Sustain the highest standards of professionalism and safety while promoting a diverse and talented workforce.
- Develop, implement and sustain robust readiness and training process that enable a resilient workforce, **prepared for combat operations**, afloat and ashore.
- Strengthen enduring relationships with maritime industry partners to promote the skills and capacity required of the U.S. Maritime Workforce to execute MSC missions.

Drive Decision Advantage

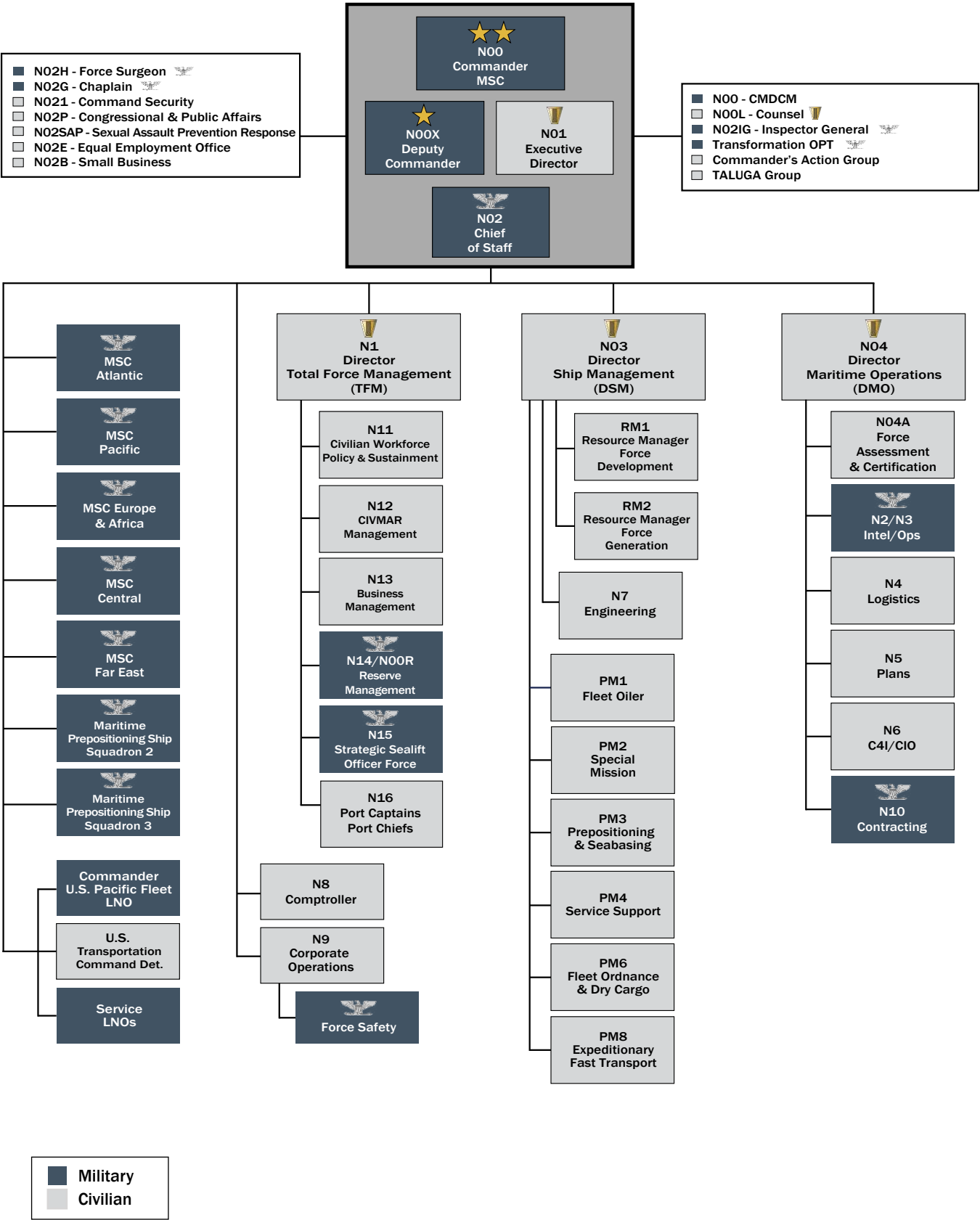
- Develop and sustain data analytics and information sharing that enables enterprise-wide collaboration and **agile decision making**.
- Utilize decision, action, and **assessment methodologies** that achieve timely and effective force development, force generation, and force employment, aligned to Fleet and Combatant Commander priorities.

Chain of Command



Organizational Structure

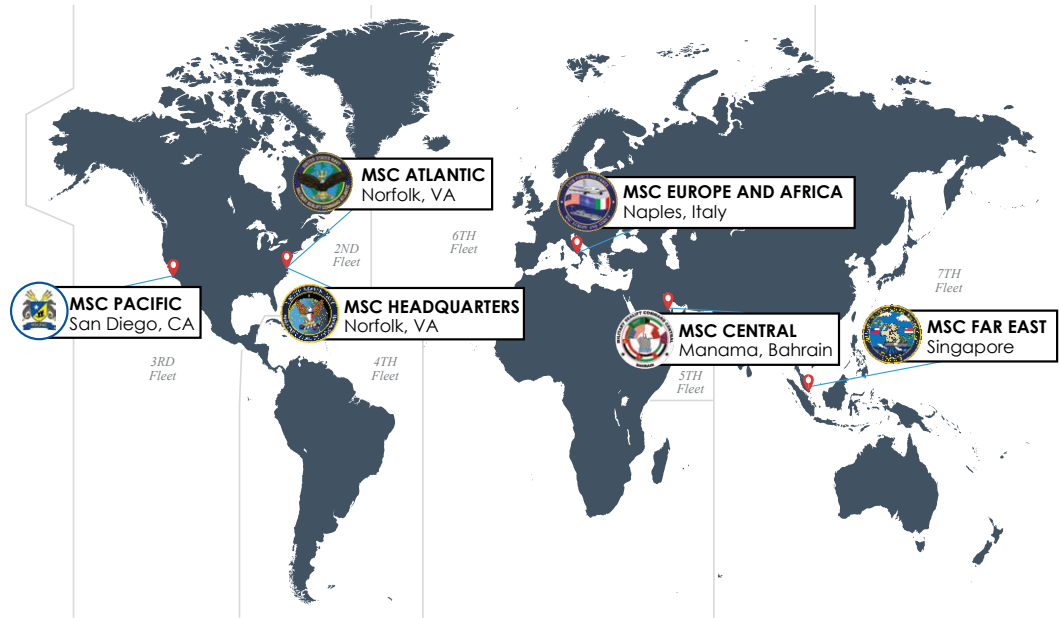
UNITED WE SAIL



Area Commands

Area commands provide expertise and operational perspective to Navy Fleet commanders worldwide. The area commands are operationally focused and are aligned with the Numbered Fleet logistics staffs in their respective theaters: **Atlantic** in Norfolk, Virginia; **Pacific** in San Diego; **Europe and Africa** in Naples, Italy; **Central** in Manama, Bahrain, and **Far East** in Singapore.

Area commands also have offices and representatives in Diego Garcia; Okinawa, Japan; Republic of Korea; Spain; Greece (Crete); the United Arab Emirates; Djibouti; Pearl Harbor, Hawaii; Seattle, Earle, New Jersey; Sunny Point, North Carolina; Charleston, South Carolina; Beaumont, Texas; Port Canaveral, Florida, and Jacksonville, Florida. Ship maintenance and support functions are integrated into six maintenance hubs that operate under the MSC area commands in the following locations: Naples, Italy; Manama, Bahrain; Singapore; Yokohama, Japan; San Diego and Guam.



Mike Cook, Military Sealift Command civilian master of the submarine tender USS Emory S. Land (AS 39), center, and Sailors assigned to USS Emory S. Land discuss navigation operations on the bridge. (U.S. Navy photo by Mass Communication Specialist Seaman Apprentice Ethan Lambert)

RISE TO THE CHALLENGE

THE RIGHT OPPORTUNITIES.
THE RIGHT TIME.

Now is your chance to accept the challenge and endless opportunities of a new career as a civil service mariner. You'll continue to serve your country as you create an exciting new future. It's time to Take Command of Your Career.



LEARN MORE ABOUT OUR OPEN POSITIONS AND JOB BENEFITS.

MSC is an equal opportunity employer and a drug-free workplace.

CAREER ADVANCEMENT

JOB SECURITY

PAID LEAVE

FEDERAL BENEFITS

ACTIVELY HIRING:

1st Officer • 2nd Officer • 3rd Officer • Damage Control Officer • Able Seaman
1st Assistant Engineer • 2nd Assistant Engineer • 3rd Assistant Engineer
Refrigeration Engineer • Deck Engineer Machinist • Pumpman
Unlicensed Junior Engineer • Electrician • Electronics Technician
Operations Chief • Yeoman Storekeeper • Culinary Positions
Communications Positions

Some positions offer a sign-on bonus!



CIVMAR@SEALIFTCOMMAND.COM • 877-291-6661 • SEALIFTCOMMAND.COM

MSC RESERVES

The Navy Reserve mission for MSC is to provide cargo afloat rig teams (CART), expeditionary port units (EPUs), headquarters (HQ) support units, and Tactical Advisors (TACADs) for operations which require additional manpower not normally required during sustained peacetime operations. The Navy Reserve is MSC's workforce solution for surge mission sets. As the Navy Component to U.S. Transportation Command, MSC serves as the Sealift Operational Commander and force employer responsible for training the Strategic Sealift Readiness Group (SSRG). In FY 2024, MSC maintained 26 reserve units supported by 956 Selected Reservists, and 2,300 Individual Ready Reserve (IRR) Strategic Sealift Officers (SSO).

CART – Provide qualified and experienced underway replenishment rig teams to augment U.S. government civil service crews on combat logistics force (CLF) platforms. MSC has five CART units providing 12 rig teams. During FY 2024, Navy Reserve CART members provided 821 total mission days supporting underway replenishment (UNREP), ammunition offload/onload evolutions, and exercise support to Composite Training Unit Exercise (COMPTUEX) 23 and Rim of the Pacific (RIMPAC) 24.

EPUs – Provide liaison and ship husbandry support for forward-deployed port operations. MSC has 10 EPUs aligned under MSC's five area commanders.

HQ Support Units – Provide trained watch standers and staff support personnel to augment MSC HQ, U.S. Transportation Command MSC Detachment at Scott Air Force Base, Illinois, and the five area command staffs. MSC has eight HQ support units. The HQ logistics support unit provides direct support to operational logistics and fleet sustainment. HQ units provide augment support for headquarters duties including Battle Watch, N3, N6, and other divisions.

TACADs – Serve on ships under Naval Transportation (NAVTRANS) operational control. TACADs ensure the ship can complete its mission in a Contested Maritime Environment by advising the ship's master on threats and ways to mitigate those threats as well as train the crews to increase survivability. Mitigation measures are coordinated with MSCHQ, the MSC Area Command, the Numbered Fleet Commanders, and other

DoD Forces. In FY 2024, TACADs supported 87 mission assignments providing 3,974 days of support for Operation Atlantic Resolve, Operation Prosperity Guardian, Operation Pathways, and Operation Neptune Solace/Gaza JLOTS humanitarian mission. These missions were primarily supported by SSO and Surface Warfare Officer volunteers, however, this fiscal year included the mobilization of 10 TACADS in support of Operation Atlantic Resolve.

SSRG - Comprised of 2,300 IRR SSOs. The SSO Force (SSOF) provides warfare qualified Navy Reserve Officers with USCG merchant mariner credentials and military training to support the activation, operation, and sustainment of the U.S. organic Strategic Sealift Fleet and in support to maritime domain operations, and the maritime industrial base throughout the continuum of conflict. The SSRG provided substantial support to CLF and contract ships, Area Commands, MSCHQ Battle Watch, N7, and other departments over the year. SSOF also supported test and evaluation of the Modular Console Adapter Kit on the MT Evergreen State.

During the year, MSC Reserve members supported the following exercises and activities: Turbo Activation, Turbo Challenge, Turbo Distribution, Cobra Gold, Defender Pacific, Large Scale Exercise, Tuscan Trident, COMPTUEX, RIMPAC, multiple TACAD missions, and support to MSCHQ and all five area commands.



Military Sealift Command Reserve Sailors tour Expeditionary Transfer Dock vessel USNS Montford Point (T-ESD 1) while attending a four-day symposium at Naval Station Norfolk, Virginia. (Photo by Senior Chief Lynita King)

Combat Logistics Force

Combat Logistics Force (CLF) ships provide logistics support such as fuel, ordnance, food, repair and spare parts, and other stores to deployed U.S. Navy and partner-nation ships. These ships enable combatants to remain on station and continue their primary mission without having to return to port for resupply. They are essential when combatants cannot receive supplies from local ports in theater due to force protection measures. All three types of CLF ships are U.S. government-owned, crewed by Civil Service Mariners, and capable of integrating rotary wing aircraft operations.

Fleet Replenishment Oilers



The Wasp-class amphibious assault ship USS Bataan (LHD 5), left, and the fleet replenishment oiler USNS Patuxent (T-AO 201) conduct a replenishment-at-sea. (U.S. Navy photo by Mass Communication Specialist 2nd Class Moises Sandoval)

In FY 2024, Military Sealift Command operated 14 fleet replenishment oilers of the T-AO 187 Henry J. Kaiser class. The T-AO fleet provided fuel as well as other dry cargo for transfer to customers via underway or vertical replenishment.

With six Atlantic Ocean-based ships and eight Pacific Ocean-based ships, T-AOs conducted operations in support of Commander, Task Force (CTF) 80, U.S. 4th Fleet in South America, U.S. 6th Fleet in the Mediterranean Sea, U.S. 5th Fleet in the Arabian Gulf and U.S. 7th Fleet in the Pacific. The oilers participated in Fleet exercises and contingency support, providing a variety of fuels for ship propulsion, aircraft operations, and power generation.

Fleet oiler USNS Kanawha was awarded the Navy Unit Commendation for outstanding performance while deployed to U.S. 5th Fleet and supporting the USS Dwight D. Eisenhower Carrier Strike Group during operations in the Red Sea and surrounding waters.



Sailors retrieve supplies on the main deck aboard the Arleigh Burke-class guided-missile destroyer USS Russell (DDG 59) during a replenishment-at-sea with the Henry J. Kaiser-class fleet replenishment oiler USNS John Ericsson (T-AO 194). (U.S. Navy photo by Mass Communication Specialist 3rd Class John A. Miller)



Military Sealift Command's newest fleet replenishment oiler USNS Earl Warren (T-AO 207) underway off the coast of San Diego. (NASSCO Courtesy Photo)

The Navy accepted delivery of USNS Earl Warren in May, the third ship of a new class of fleet replenishment oilers. In addition, the Navy christened the fourth and fifth vessels of the class, USNS Robert F. Kennedy and USNS Lucy Stone, at ceremonies in San Diego.



The Ticonderoga-class guided-missile cruiser USS Antietam (CG 54) receives fuel from the Henry J. Kaiser-class fleet replenishment oiler USNS Yukon (T-AO 202) during a fueling at sea in the Philippine Sea. (U.S. Navy photo by Mass Communication Specialist 1st Class Ryre Arciaga)

Fleet Replenishment Oilers (PM1)

- USNS Henry J. Kaiser (T-AO 187)
- USNS Joshua Humphreys (T-AO 188)
- USNS John Lenthall (T-AO 189)
- USNS John Ericsson (T-AO 194)
- USNS Leroy Grumman (T-AO 195)
- USNS Kanawha (T-AO 196)
- USNS Pecos (T-AO 197)
- USNS Big Horn (T-AO 198)
- USNS Tippecanoe (T-AO 199)
- USNS Guadalupe (T-AO 200)
- USNS Patuxent (T-AO 201)
- USNS Yukon (T-AO 202)
- USNS Laramie (T-AO 203)
- USNS Rappahannock (T-AO 204)
- USNS John Lewis (T-AO 205)
- USNS Harvey Milk (T-AO 206)
- USNS Earl Warren (T-AO 207)

Dry Cargo and Ammunition Ships

Dry Cargo and Ammunition ships, or T-AKEs, were designed to replenish dry and refrigerated stores as well as ordnance. These multi-product ships afford delivery capability to provide food, fuel, spare parts, ammunition and potable water to the U.S. Navy and our allies.

During FY 2024, 12 T-AKE ships were operational within the Combat Logistics Force (CLF). Three ships were Atlantic-based and supported CTG 80.83 and CTF 63 in the U.S. 2nd, 4th, and 6th Fleet areas of operation. USNS Robert E. Peary and USNS Medgar Evers conducted a deployment to 6th Fleet in support of the USS Gerald R. Ford (CVN 78) CSG, USS Bataan (LHD 5) ARG, and NATO forces. USNS William McLean supported multiple carrier and expeditionary strike group exercises and ordnance transfers for CTF 80 off the East Coast.

Nine ships were Pacific-based with two of those ships, USNS Alan Shepard and USNS Amelia Earhart, forward-deployed to 5th Fleet. The other seven T-AKEs operated in support of the 3rd and 7th Fleets. One Pacific-based ship, USNS Washington Chambers, deployed from 3rd Fleet to 7th Fleet, in support of the USS Nimitz (CVN 68) CSG.

Fleet Ordnance and Dry Cargo (PM6)

Dry Cargo / Ammunition Ships

- USNS Lewis and Clark (Prepositioning) (T-AKE 1)
- USNS Sacagawea (Prepositioning) (T-AKE 2)
- USNS Alan Shepard (T-AKE 3)
- USNS Richard E. Byrd (T-AKE 4)
- USNS Robert E. Peary (T-AKE 5)
- USNS Amelia Earhart (T-AKE 6)
- USNS Carl Brashear (T-AKE 7)
- USNS Wally Schirra (T-AKE 8)
- USNS Matthew Perry (T-AKE 9)
- USNS Charles Drew (T-AKE 10)
- USNS Washington Chambers (T-AKE 11)
- USNS William McLean (T-AKE 12)
- USNS Medgar Evers (T-AKE 13)
- USNS Cesar Chavez (T-AKE 14)

Fast Combat Support Ships

- USNS Supply (T-AOE 6)
- USNS Arctic (T-AOE 8)



An MH-60S Sea Hawk, assigned to the "Black Knights" of Helicopter Sea Combat Squadron (HSC) 4, carries cargo to Nimitz-class aircraft carrier USS Carl Vinson (CVN 70) as the ship conducts a replenishment-at-sea with Lewis and Clark-class dry cargo ship USNS Washington Chambers (T-AKE 11) during Exercise Rim of the Pacific (RIMPAC) 2024. (U.S. Navy photo by Mass Communication Specialist Seaman Apprentice Rocio Zavala-Ramirez)

It was a year of firsts as MSC leveraged new partners in the ship repair and maintenance arena and expanded our capability. Amelia Earhart conducted the first major maintenance availability (repair, overhaul, and dry docking (ROH/DD)) for a T-AKE at Dubai Drydock World, USNS Wally Schirra was the first T-AKE to conduct a ROH/DD at Hanwha Shipyard on Goji Island, Korea, and USNS Charles Drew conducted the first major maintenance availability in Chennai, India.

Fast Combat Support Ships

Throughout the year, two Atlantic-based fast combat support ships (T-AOE) kept Navy surface fleets supplied and combat-ready by providing parts, supplies and fuel at sea. Fast combat support ship USNS Supply conducted a historic deployment to 6th and 5th Fleet in support of the USS Dwight D. Eisenhower (CVN 69) CSG during kinetic operations. Supply was awarded the Navy Unit Commendation for their efforts in supporting the Dwight D. Eisenhower CSG. During the 247-day deployment, Supply transferred 33 million gallons of fuel and nearly 15,000 pallets of cargo to 15 coalition and 16 U.S. ships.

The Lewis and Clark-class dry cargo ship USNS Amelia Earhart (T-AKE 6), left, and the Arleigh Burke-class guided-missile destroyer USS Michael Murphy (DDG 112) conduct a replenishment-at-sea. (Official U.S. Navy photo)



The Nimitz-class aircraft carrier USS Harry S. Truman (CVN 75) sails alongside the fast combat support ship USNS Arctic (T-AOE 8) during a replenishment-at-sea, on a scheduled deployment in the U.S. Naval Forces Europe area of responsibility. (U.S. Navy photo by Mass Communication Specialist Seaman Michael Gomez)



An AS-332 Super Puma, assigned to the Lewis and Clark-class dry cargo ship USNS Wally Schirra (T-AKE 8), takes off from the flight deck of the Nimitz-class aircraft carrier USS Theodore Roosevelt (CVN 71) during a vertical replenishment. (U.S. Navy photo by Mass Communication Specialist Seaman Apprentice Aaron Haro Gonzalez)

Commercial Helicopter Program

Four commercial helicopter detachments are permanently embarked aboard T-AKE ships providing vertical replenishment (VERTREP), internal cargo, passenger movement, medical evacuation, and unassisted search and rescue (SAR) services for operations in the Arabian Gulf, Arabian and Red Seas, the Indian Ocean, and the Western Pacific Ocean.

Three Pacific detachments (Alpha, Bravo, and Charlie) are forward deployed out of Guam, providing services to 7th Fleet.

Detachment Alpha began FY 2024 aboard USNS Carl Brashear where they remained until January 2024. They cross-decked to USNS Wally Schirra until August 2024, then were shore based in Guam for a short time before embarking aboard USNS Richard E. Byrd in late September for the remainder of the fiscal year.

Detachment Bravo started FY 2024 aboard USNS Charles Drew where they remained through the end of August 2024. They went ashore in Guam for the remainder of the fiscal year in preparation to moving aboard Carl Brashear.

Detachment Charlie began the fiscal year aboard USNS Matthew Perry through early January. They went ashore in Guam for a short period before embarking aboard USNS Cesar Chavez for the remainder of the fiscal year.

The NAVCENT Detachment supports 5th and 6th Fleet operations. They began the fiscal year aboard USNS Amelia Earhart through December. They went ashore in Bahrain for a short time before embarking aboard USNS Alan Shepard. They cross-decked back to the Amelia Earhart in September where they spent the remainder of the fiscal year.

FY 2024 Commercial Helicopter Operations

Flight Hours
Mission: 572.6
Training: 103.1
Flight Check: 26.7
Total: 702.4

Logistic Totals
Cargo: 8,494.4 Tons
Mail: 304 Tons
Pallets: 17,734
Passengers: 102

Special Mission

The Special Mission Program managed various seagoing platforms to support U.S. government agencies, including U.S. Fleet Forces Command; U.S. Pacific Fleet; the Oceanographer of the Navy; Commander, Submarine Force; Commander, Undersea Surveillance; Navy’s Strategic Systems Programs Office; and the U.S. Air Force. These ships were operated by mariners employed by companies under contract to Military Sealift Command. Agency-provided mission support detachments, including U.S. military and civilian personnel, performed the mission work and specialized shipboard tasks.

Submarine Support Ships

MSC operated USNS Black Powder, USNS Westwind, USNS Eagleview, and USNS Arrowhead in support of the U.S. and United Kingdom ballistic missile submarine force, providing transit protection, and open ocean passenger and supplies transfer services. The ships also served as vessels of opportunity if needed to support undersea rescues.

Oceanographic Survey Ships

MSC’s six oceanographic survey ships – USNS Pathfinder, USNS Bowditch, USNS Henson, USNS Bruce C. Heezen, USNS Mary Sears, and USNS Marie Tharp – used precise, multi-beam, wide-angle, hydrographic sonar systems to collect water depth measurements and other related data. The information produces accurate charts and other products for Navy warfighters. In addition to survey work, these ships can be outfitted with a naval mobile instrumentation system, providing downrange missile tracking capabilities. Construction continued on a new oceanographic survey ship, the future USNS Robert Ballard (T-AGS 67).



Future USNS Robert Ballard (T-AGS 67) Pathfinder-class oceanographic survey ship under construction at Bollinger Shipyard in Pascagoula, Mississippi. (Courtesy photo)

Submarine Support Ships

- USNS Black Powder (T-AGSE 1)
- USNS Westwind (T-AGSE 2)
- USNS Eagleview (T-AGSE 3)
- USNS Arrowhead (T-AGSE 4)

Oceanographic Survey Ships

- USNS Pathfinder (T-AGS 60)
- USNS Bowditch (T-AGS 62)
- USNS Henson (T-AGS 63)
- USNS Bruce C. Heezen (T-AGS 64)
- USNS Mary Sears (T-AGS 65)
- USNS Marie Tharp (T-AGS 66)

Ocean Surveillance Ships

- USNS Victorious (T-AGOS 19)
- USNS Able (T-AGOS 20)
- USNS Effective (T-AGOS 21)
- USNS Loyal (T-AGOS 22)
- USNS Impeccable (T-AGOS 23)
- HOS Red Rock (SURTASS-E)
- HOS Red Dawn (SURTASS-E)

Missile Range Instrumentation Ship

- USNS Howard O. Lorenzen (T-AGM 25)

Navigation Test Support Ship

- USNS Waters (T-AGS 45)

Cable Laying/Repair Ship

- USNS Zeus (T-ARC 7)
- CS Global Sentinel

Sea-based X-band Radar Platform

- SBX-1

Special Mission (PM2)

msc.usff.navy.mil

Ocean Surveillance Ships

In the Western Pacific, five ocean surveillance ships, USNS Effective, USNS Loyal, USNS Impeccable, USNS Victorious, and USNS Able, continued to support U.S. 7th Fleet. Charter ships HOS Red Rock and HOS Red Dawn provided expeditionary ocean surveillance capability to U.S. 2nd and 6th Fleets.

Missile Range Instrumentation Ship

Missile range instrumentation ship USNS Howard O. Lorenzen served as a seaborne platform for radar systems, collecting data on ballistic missile launches.

Navigation Test Support Ship

Navigation test support ship USNS Waters continued operations supporting weapons and navigation systems testing.

Cable Laying/Repair

USNS Zeus and her chartered counterpart Global Sentinel are cable-laying/repair ships, installing and maintaining critical national infrastructure in support of combatant and Fleet commanders around the globe.

Sea-based X-band Radar

The Sea-based X-band Radar provides support for the Missile Defense Agency. Resupply of the vessel allows continuous operations by transporting people, food, fuel, and cargo to and from SBX to support the mission. SBX is an element of the Ballistic Missile Defense System and operates primarily in the Northern Pacific region.



SBX-1

SBX-1 in port Pearl Harbor, Hawaii, undergoing routine maintenance. (U.S. Navy photo by Billie Wunderle)

Prepositioning and Seabasing

The Military Sealift Command operates prepositioning vessels and seabasing ships for the U.S. Navy, Marine Corps, Army, and Air Force from strategic locations around the world.

Maritime Prepositioning Force

Prepositioning ships are loaded with combat and sustainment supplies that arrive early to support a wide spectrum of operations during strategic competition, crises, and conflicts. Each ship is assigned to one of two forward-deployed squadrons, with all ships encompassing the broader Maritime Prepositioning Force (MPF).

These vessels are equipped with aviation decks, watercraft, hose systems, and other unique features that enable them to deliver rolling stock, ammunition, supplies, bulk fuel, and water. Supplies can be offloaded at the pier, in-stream, ship-to-ship, or by air. MPF vessels USNS 1ST LT Baldomero Lopez and USNS GYSGT Fred W. Stockham participated in the Gaza Humanitarian Assistance and Disaster Relief (HADR) / Joint Logistics Over-the-Shore (JLOTS) mission in the 6th Fleet AOR. Both vessels cumulatively delivered over 5,500 pallets of food, life-saving equipment, and humanitarian aid spanning over a 112-day period to the local population in critical need, all while operating under a contested and periodically hostile environment. Additionally, GYSGT Fred W. Stockham also occasionally filled the role as a shuttle ship for humanitarian aid transit between Cyprus and Gaza. The civilian contract mariners, working in partnership with U.S. military uniformed personnel and members of the MSC shore-based team, made this assignment an overall success. USNS 2ND LT John P. Bobo is scheduled for inactivation and transfer to the U.S. Maritime Administration.



U.S. Army Soldiers assigned to the 7th Transportation Brigade (Expeditionary) aboard LSV-5 approach the Roll-on Roll-off Distribution Facility secured to USNS GYSGT Fred W. Stockham (T-AK-3017) off the coast of Gaza. The temporary pier, part of the Joint Logistics Over-the-Shore capability, was used for delivery of international humanitarian aid to Gaza. (U.S. Navy photo by Mass Communication Specialist 1st Class Kelby Sanders)



LEFT: U.S. Army Soldiers use a rope to stabilize humanitarian aid while it is lifted by a crane aboard the MV Roy P. Benavidez at the Port of Ashdod, Israel. These Soldiers supported the construction of the Joint Logistics Over-the-Shore system off the shore of Gaza. (U.S. Army photo by Staff Sgt. Malcolm Cohens-Ashley) RIGHT: A DoD-contracted driver transports humanitarian aid from the U.S. Army vessel LSV-1, across the Trident Pier, and onto the beach in Gaza. (U.S. Army photo by Staff Sgt. Mikayla Fritz)

Expeditionary Transfer Dock

Expeditionary Transfer Docks (ESD) are designed to be semi-submersible, flexible, modular platforms providing the U.S. Navy with the capability to perform large-scale logistics movements.

The USNS Montford Point served as a prominent platform for the Naval Research Laboratory during the study and survey of new antenna equipment related testing capabilities, which concluded in August 2024. The ship also hosted several VIPs throughout the year. USNS John Glenn remained in a reduced operating status.

Maritime Prepositioning

USNS Seay (T-AKR 302)
USNS Pilliaau (T-AKR 304)
USNS Sisler (T-AKR 311)
USNS Dahl (T-AKR 312)

USNS 2ND LT John P. Bobo (T-AK 3008)
USNS PFC Dewayne T. Williams (T-AK 3009)
USNS 1ST LT Baldomero Lopez (T-AK 3010)
USNS 1ST LT Jack Lummus (T-AK 3011)
USNS SGT William R. Button (T-AK 3012)
USNS GYSGT Fred W. Stockham (T-AK 3017)

Offshore Petroleum Distribution System

USNS VADM K.R. Wheeler (T-AG 5001)
USNS Fast Tempo (T-AG 4907)

Expeditionary Transfer Dock

USNS Montford Point (T-ESD 1)
USNS John Glenn (T-ESD 2)

Expeditionary Sea Base

USS Lewis B. Puller (ESB 3)
USS Hershel "Woody" Williams (ESB 4)
USS Miguel Keith (ESB 5)
USS John L. Canley (ESB 6)
USNS Robert E. Simanek (ESB 7)

Army Prepositioned Stocks Large, Medium-Speed, Roll-on/Roll-off Ships

USNS Watson (T-AKR 310)
USNS Red Cloud (T-AKR 313)
USNS Charlton (T-AKR 314)
USNS Watkins (T-AKR 315)
USNS Pomeroy (T-AKR 316)
USNS Soderman (T-AKR 317)

Army Prepositioned Stocks Container Ships

MV LTC John U.D. Page (T-AK 4543)
MV SSG Edward A. Carter Jr. (T-AK 4544)

U.S. Air Force Container Ships

MV CAPT David I. Lyon (T-AK 5362)
MV MAJ Bernard F. Fisher (T-AK 4396)

Expeditionary Sea Base

The expeditionary sea base (ESB) USS Lewis B. Puller-class, the Navy's first purpose-built afloat forward staging base, can execute missions to support Aviation Mine Countermeasure and Special Forces. The platform has an aviation hangar and flight deck that includes four operating spots capable of landing MV-22 and MH-53E equivalent helicopters as well as accommodations, workspaces, and ordnance storage for an embarked force. Additionally, ESBs can support Unmanned Aerial Vehicle (UAV) missions. The platform also provides enhanced command and control, communications, computers, and intelligence capabilities to support embarked force mission planning and execution. The reconfigurable mission deck can store equipment, including mine sleds and rigid hull inflatable boats. Designated as a Forward-Deployed Naval Force ship, ESBs operate worldwide. Lewis B. Puller is homeported in Bahrain and supports U.S. 5th Fleet. USS Hershel "Woody" Williams is homeported in Souda Bay, Crete, Greece, supporting 6th Fleet. USS Miguel Keith and USS John L. Canley are homeported in Saipan and support 7th Fleet.

The Navy accepted delivery of the fifth ESB, the USNS Robert E. Simanek in September. One additional ship of the class, the future USNS Hector A. Cafferata, Jr., is under construction and scheduled to deliver in 2026.



National Montford Point Marines Association (NMPMA) members pose for a group photo during a tour of USNS Montford Point (T-ESD 1). During the visit, members of the NMPMA toured the ship and were briefed on mission capabilities. (U.S. Navy photo by Ryan Carter)

U.S. Marine Corps AH-1Z Vipers and UH-1Y Venoms attached to Marine Medium Tiltrotor Squadron (VMM) 165 (Reinforced), 15th Marine Expeditionary Unit, rest on the flight deck of the expeditionary sea base USS Miguel Keith (ESB 5) while underway in the Philippine Sea. (U.S. Marine Corps photo by Capt. Staci Morris)



USS MIGUEL KEITH (ESB 5)

Offshore Petroleum Distribution System

USNS VADM K. R. Wheeler and USNS Fast Tempo comprised of an offshore petroleum distribution system (OPDS) and remained in reduced operating status in Lake Union, Washington. Utilizing commercial technology from the offshore oil industry, these ships are ready to pump fuel to beach distribution facilities from up to 8 miles offshore. USNS VADM K.R. Wheeler completed a regulatory overhaul from February to April at Vigor Shipyard.

Army Prepositioned Stocks and Container Ships

In FY 2024, six Watson-class LMSRs and two container ships supported the Army Prepositioned Stocks Program. USNS Red Cloud exchanged missions with USNS Watkins. Equipment aboard the Red Cloud was refurbished and transferred to the Far East aboard Watkins. After this exchange, Red Cloud underwent a regulatory overhaul.

USNS Watson returned to the continental U.S. for cargo discharge and a regulatory overhaul. After the overhaul, the vessel loaded prepositioning equipment and returned to Diego Garcia. Additionally, after completion of a regulatory overhaul, USNS Pomeroy loaded Army prepositioning equipment for deployment to South Korea.

Container ships MV SSG Edward A. Carter, Jr. and MV LTC John U.D. Page were assigned in the Pacific region throughout the year.

Air Force Container Ships

Container ships MV MAJ Bernard F. Fisher and MV CAPT David I. Lyon remained in the Western Pacific throughout most of the year supporting U.S. Air Force munitions requirements. David I. Lyon returned for regulatory maintenance, went off-hire, then placed on contract for return to the Western Pacific.

UNITED WE SAIL

Rescue and Salvage Ships

Rescue and salvage ships, with embarked Navy dive teams, performed their primary functions and provided the additional towing capability for the Navy. Rescue and salvage ships supported aircraft recovery, dive and salvage training, and towing operations. USNS Grasp and USNS Salvor supported numerous diving, explosive ordnance disposal, and Naval Special Warfare training missions in the Pacific. The Navy christened the second multipurpose platform for towing, salvage and rescue, USNS Cherokee Nation, in a ceremony in Houma, Louisiana, in June.

Fleet Ocean Tugs

Fleet ocean tug USNS Catawba provided towing, salvage, unit training, rescue support, and diving and recompression system support. Catawba provided U.S. 5th Fleet with an on-call emergency towing and salvage capability. The ship supported multiple mine countermeasure events, autonomous underwater vehicle mission support, and dive and salvage training.

Submarine Tenders

Two submarine tenders provided sustained, forward-based support to assigned submarines at anchor or pier side. USS Emory S. Land and USS Frank Cable provided forward area repair and service facilities for Commander, Submarine Forces Pacific. Tenders operate with hybrid crews of Civil Service Mariners and Sailors. Mariners perform navigation, deck, engineering, communications, supply, and galley duties, while Sailors provide maintenance and repair capabilities. A Navy captain leads the submarine tender combined crew. Frank Cable completed a three-month Western Pacific deployment in support of submarine and surface ship maintenance.



USS Florida (SSGN 728) conducts an expeditionary reload of Tomahawk Land Attack Missiles (TLAMs) alongside the Emory S. Land-class submarine tender USS Frank Cable (AS 40) on Naval Base Guam. (U.S. Navy photo by Mass Communication Specialist 1st Class Justin Wolpert)

Rescue and Salvage Ships

USNS Grasp (T-ARS 51)
USNS Salvor (T-ARS 52)

Fleet Ocean Tugs

USNS Catawba (T-ATF 168)
MV Gary Chouest

Submarine Tenders

USS Emory S. Land (AS 39)
USS Frank Cable (AS 40)

Hospital Ships

USNS Mercy (T-AH 19)
USNS Comfort (T-AH 20)

Submarine and Special Warfare Support Ships

MV HOS Rosebud
MV HOS Dominator
MV Alyssa Chouest
MV Kellie Chouest
PTV Malama

Command Ship

USS Mount Whitney (LCC 20)

Fleet Experimentation

OSV Ocean Valor
SLV HOS Resolution



The hospital ship USNS Mercy (T-AH 19) anchors off of Chuuk, Federated States of Micronesia, as part of Pacific Partnership 2024-1. (U.S. Navy photo by Ens. Lacy Burkett)

Hospital Ships

Military Sealift Command operates two hospital ships, USNS Mercy and USNS Comfort. Both ships are converted San Clemente-class oil tankers. Hospital ships provide an afloat, mobile, acute surgical medical facility to the U.S. military that is flexible, capable, and uniquely adaptable to support expeditionary warfare. A secondary mission is to provide complete hospital services to support U.S. disaster relief and humanitarian assistance missions.

When at full operating status, 1,200 military and medical personnel and 70 Civil Service Mariners operate the ship and 1,000-bed medical facility. The ship has 12 fully equipped operating rooms and provides digital radiological, laboratory, pharmacy, optometry, dental, and physical therapy services. When not deployed, Mercy is in reduced operating status in San Diego, and Comfort in Norfolk, Virginia.

A small crew of Civil Service Mariners and Navy medical personnel maintain the ships in a high state of readiness and can transition to full operating status within five days. During FY 2024, Mercy deployed to Oceania and the Western Pacific for the 18th iteration of Pacific Partnership with mission stops in Republic of the Marshall Islands, Solomon Islands, Palau, and Federated States of Micronesia.



U.S. Navy Lt. Cmdr. Charlotte Hughes speaks to a Chuukese pediatric patient prior to surgery aboard the hospital ship USNS Mercy (T-AH 19), anchored off Chuuk, Federated States of Micronesia, as part of Pacific Partnership 2024-1. (U.S. Navy photo by Mass Comm. Specialist 2nd Class Celia Martin)

Submarine and Special Warfare Support Ships

MV Malama provided passenger transfer services and logistic support in the open ocean to U.S. Pacific Fleet submarines. MV HOS Dominator delivered submarine rescue training and exercise support for Commander, U.S. Pacific Fleet and partner nations. Other vessel charters supported U.S. Special Operations Command requirements worldwide.

Command Ship

USS Mount Whitney supported Commander, U.S. 6th Fleet as a joint task force command ship, serving as a command and control platform for embarked commanders from NATO and naval components. In FY 2024, the ship participated in multiple U.S. and NATO exercises and conducted port visits throughout Europe. Mount Whitney operated with a hybrid crew of U.S. government Civil Service Mariners and uniformed military personnel under the leadership of a Navy captain.



U.S. Navy Sailors with Helicopter Sea Combat Squadron 28 conduct pre-flight training aboard the Blue Ridge-class command and control ship USS Mount Whitney (LCC 20) during Baltic Operations (BALTOPS) 24 in the Baltic Sea. (U.S. Marine Corps photo by Cpl. Marc Imprevet)



The Blue Ridge-class command and control ship USS Mount Whitney (LCC 20) sails during Baltic Operations (BALTOPS) 24 in the Baltic Sea. BALTOPS 24 is the premier maritime-focused exercise in the Baltic Region. (U.S. Marine Corps photo by Cpl. Marc Imprevet)

USS MOUNT WHITNEY (LCC 20)

Harbor Tug Charters

Eight harbor tugboat time charters supported vessel movements and hurricane response requirements for Commander, Navy Installations Command at multiple continental United States locations and in Guam and Hawaii, and Commander, Naval Sea Systems Command at Portsmouth Naval Shipyard, Maine.

Fleet Experimentation

Chartered offshore support vessels provided capability development activities for advanced mobile logistics concepts and the Next Generation Logistics Ship development. Charter ship HOS Resolution served as a stern landing vessel to support U.S. Marine Corps mobility test and evaluation requirements. Charter ship Starfleet Patriot supported Naval Surface Warfare Center Panama City Division technology development efforts.



Stern Landing Vessel HOS Resolution, a modified oil-rig industry off-shore support vessel, in port at Naha Military Port, Okinawa, Japan. The Marine Corps Warfighting Laboratory contracted the SLV to explore maneuver and sustainment options for Stand-In Forces to inform the development of the Medium Landing Ship. (U.S. Marine Corps photo by Kevin Ray J. Salvador)

Charter Support

Charter contracts were developed, awarded, and administered to fill multiple spot charter requirements in FY 2024. These charters supported various Department of Defense sponsors for required training and exercise support, government asset towing, and various maintenance and experimentation support needs.

Expeditionary Fast Transport

Expeditionary Fast Transport (EPF), designed for rapid, intra-theater transport of troops and military equipment, has a 20,000-square-foot mission bay that can be reconfigured to carry containerized and dry cargo in addition to military vehicles and equipment. The design features a flight deck capable of landing multiple helicopter variants, a stern ramp for vehicle access to the mission deck, and seating for 312 passengers. These vessels are crewed by Civil Service Mariners while military personnel embark to support mission sponsor requirements. MSC has accepted delivery of 14 of the planned 16 EPFs. In addition, three Expeditionary Medical Ships (EMS) are planned to join the fleet in future years.



Civil Service Mariners load non-government organization donations onto the Spearhead-class expeditionary fast transport ship USNS Burlington (T-EPF 10) for Continuing Promise 2024. Continuing Promise 2024 marks the 14th mission to the region since 2007 and the second aboard USNS Burlington. (U.S. Navy photo by Mass Communication Specialist Seaman Jasmin L. Aquino)

Expeditionary Fast Transport (PM8)

- Expeditionary Fast Transport**
- USNS Spearhead (T-EPF 1)
 - USNS Choctaw County (T-EPF 2)
 - USNS Millinocket (T-EPF 3)
 - USNS Fall River (T-EPF 4)
 - USNS Trenton (T-EPF 5)
 - USNS Brunswick (T-EPF 6)
 - USNS Carson City (T-EPF 7)
 - USNS Yuma (T-EPF 8)
 - USNS City of Bismarck (T-EPF 9)
 - USNS Burlington (T-EPF 10)
 - USNS Puerto Rico (T-EPF 11)
 - USNS Newport (T-EPF 12)
 - USNS Apalachicola (T-EPF 13)
 - USNS Cody (T-EPF 14)

- High-Speed Transport**
- USNS Guam (HST 1)
 - Formerly MV Alakai (HST 2)



The expeditionary fast transport ship USNS City of Bismarck (T-EPF 9) sails into the Port of Legazpi in preparation for the start of Pacific Partnership 24-2 in the Philippines. (U.S. Navy photo by Mass Communication Specialist 1st Class Ryan D. McLearn)

USNS CITY OF BISMARCK (T-EPF 9)

EPFs are deployed worldwide, meeting combatant command requirements to include intra-theatre transportation, participating in multi-service and joint exercises, humanitarian assistance and disaster relief (HA/DR) missions, fleet experimentation, and contributing to military services’ readiness.

Norfolk, Virginia, is home to the USNS Burlington. Burlington supported U.S. 4th Fleet, completing deployments that included exercise Continuing Promise 24, fleet experimentation exercises and theater security cooperation events.

The U.S. European Command and U.S. Africa Command is home to USNS Trenton, which conducted joint service, intra-theatre lifts, and provided maritime support capabilities. USNS Yuma returned to the continental United States (CONUS) after over six years of continuous support to U.S. European Command and U.S. Africa Command.

The Far East region is home to two EPFs, supporting missions and exercises for U.S. Indo-Pacific Command and 7th Fleet. USNS Puerto Rico supported exercises Tenacious Trident and Valiant Shield. USNS Millinocket supported operation Pacific Pathways, Valiant Shield, and CARAT before returning to CONUS after over nine years of support to U.S. Indo-Pacific Command and 7th Fleet.

Operating in support of the 3rd Fleet, USNS City of Bismarck is hubbed out of Pearl Harbor, Hawaii. The ship supported exercise Valiant Shield.

USNS Spearhead, USNS Fall River, USNS Choctaw County, USNS Yuma, USNS Newport, USNS Burlington and USNS Carson City are in a reduced operating status and are layberthed in various locations in Hawaii and CONUS. The seven ships are crewed for basic maintenance and security functions.

The Navy accepted delivery of USNS Cody in January and is currently conducting post-delivery tests and trials (PDT&T) at Joint Expeditionary Base Little Creek (JEBLC), Norfolk, Virginia. The USNS Apalachicola is also conducting PDT&T at JEBLC. Future-named EPFs include USNS Point Loma (T-EPF 15) and USNS Lansing (T-EPF 16), and Expeditionary Medical Ships, USNS Bethesda (T-EMS 1) and USNS Balboa (T-EMS 2).

High-Speed Transports

USNS Guam continues to support U.S. Marine Corps requirements in the Western Pacific. The second high-speed transport, HST 2, chartered to Bay Ferries through an Enhanced Use Lease, provides ferry service between Bar Harbor, Maine, and Yarmouth, Nova Scotia.



U.S. Marines and Sailors with 3rd Marine Logistics Group board the high-speed transport vessel USNS Guam (HST 1) in preparation for Korean Marine Exchange Program (KMEP) 24-2 at the Naha Port Facility, Okinawa, Japan. KMEP is a bilateral training exercise that increases interoperability and strengthens the combined capabilities of Republic of Korea and U.S. Marines. (U.S. Marine Corps photo by Cpl. Paley Fenner)

UNITED WE SAIL

Military Sealift Command

Dry Cargo Ship

Dry Cargo Operations

During FY 2024, the Dry Cargo Operations office chartered various commercial dry cargo vessels to move equipment, supplies, and ammunition for operations, exercises, and unit rotations. MSC chartered 28 ships and activated 15 organic ships delivering over 960,000 measurement tons of cargo supporting worldwide operations.

MSC-chartered vessels delivered ammunition to U.S. Combatant Commands, allies, and supported service-prepositioned stocks. The Joint Deployment and Distribution Enterprise relied on MSC to deliver this cargo through numerous dedicated missions sailing from Military Ocean Terminals in Concord, California, and Sunny Point, North Carolina, to destinations worldwide. A mixture of commercial and organic vessels supported ammunition sustainment missions.

MSC provided sealift transportation to the U.S. Army Pacific’s Operation Pathways, encompassing multiple exercises with MSC supporting ocean transportation and forward staging via the activation of the U.S. Maritime Administration Ready Reserve Force vessel MV Cape Hudson. The vessel supported exercises in multiple ports in the Far East, delivering cargo, enabling the Army to maintain equipment aboard the ships between missions, and executing command and control functions.

The Dry Cargo team continued to execute sustainment missions to facilities on Andros Island, Bahamas, and Diego Garcia. Thule Air Base in Greenland was provided sustainment cargo by MV Ocean Gladiator during Pacer Goose 24-1. MV Ocean Gladiator then shifted operating areas and supported the National Science Foundation through Operation Deep Freeze, the annual McMurdo Station sustainment mission to Antarctica. The operating environments for these missions required ice-capable cargo vessels meeting special requirements for operations in polar regions.

Supporting foreign humanitarian assistance operations in Gaza, MSC activated and chartered vessels to facilitate Joint Logistics Over-the-Shore enabler transport along with carriage of aid cargo. Additionally, MSC charted a berthing vessel to accommodate personnel working on the floating pier and discharge facility.

The Tactical Advisor (TACAD) program provided specially trained Strategic Sealift and Surface Warfare Reserve Officers to embark ships operating in contested maritime environments. These officers, with advanced training in secure communications and fleet interoperability, served as an operational interface between their assigned ships and Naval Fleets. This augmentation to commercial crew provides an onboard liaison for MSC’s area commanders, focusing on vessel movements and communications.

Dry Cargo

SLNC Star (T-AK 5603)



Precast concrete foundations are loaded onto the Military Sealift Command chartered ship MV Ocean Gladiator as part of the Operation Deep Freeze 2024 cargo loadout. Cargo operations are being coordinated by MSC's Expeditionary Port Unit 114 in Port Hueneme, California. (U.S. Navy photo by Sarah Cannon)

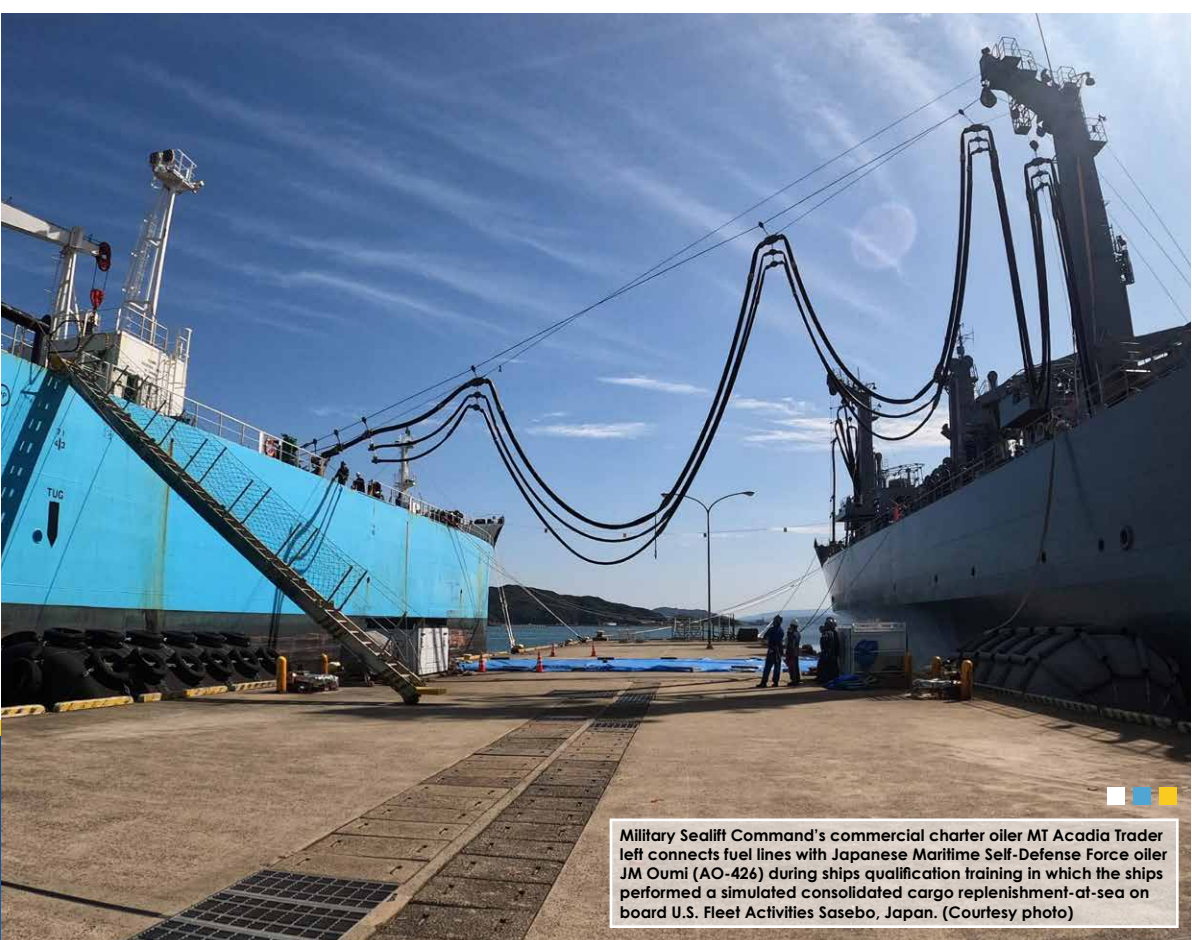
Military Sealift Command

Tanker Office

In FY 2024, Military Sealift Command chartered tankers transported 24.76 million barrels (1.03 billion gallons) of Department of Defense petroleum products during 179 voyages in support of Defense Logistics Agency-Energy. U.S.-flagged tankers carried more than 89% of the cargo.

The primary carriers were six extended-term chartered U.S.-flagged medium range tankers (MT): MT Empire State, MT Evergreen State, MT SLNC Goodwill, MT Stena Polaris, MT Yosemite Trader and shallow draft tanker MT SLNC Pax.

- Tanker Office
- MT Allied Pacific (T-AOT 5581)
 - MT Badlands Trader (T-AOT 5582)
 - MT Empire State (T-AOT 5193)
 - MT Evergreen State (T-AOT 5205)
 - MT Haina Patriot (T-AOT 5562)
 - MT Overseas Mykonos (T-AOT 5439)
 - MT Pohang Pioneer (T-AOT 5560)
 - MT SLNC Pax (T-AOT 5356)
 - MT SNLC Goodwill (T-AOT 5419)
 - MT Stena Polaris (T-AOT 5563)
 - MT Yosemite Trader (T-AOT 5532)



Military Sealift Command's commercial charter oiler MT Acadia Trader left connects fuel lines with Japanese Maritime Self-Defense Force oiler JM Oumi (AO-426) during ships qualification training in which the ships performed a simulated consolidated cargo replenishment-at-sea on board U.S. Fleet Activities Sasebo, Japan. (Courtesy photo)

The U.S.-flagged, extended-term chartered vessels were supplemented by a multiple of spot voyage and time chartered commercial tankers, both U.S. and foreign flagged. This included foreign flag tankers MT Eagle Sakura and MT Sunny Queen which supported additional requirements in the Indo-Pacific Command region.

MT Stena Polaris, the tanker with an ice-strengthened hull, delivered over 184,000 barrels of JP8 fuel to Pituffik Space Base, Greenland, during the annual resupply mission Operation Pacer Goose. MT Stena Polaris was able to complete this mission on time following a demanding, three-month consolidated cargo (CONSOL) operations support mission in the Red Sea where she transferred over 602,000 barrels of JP5 and F76 fuels.

MSC continued its support to U.S. Transportation Command, as the Global Bulk Fuel Manager, managing five extended-term charters in support of U.S. Indo-Pacific Command (IPC) afloat fuel requirements which included: MT Badlands Trader, MT Overseas Mykonos, MT Allied Pacific, MT Pohang Pioneer and MT Haina Patriot. The MT Pohang Pioneer and MT Haina Patriot were released from the IPC afloat tanker fleet to provide immediate support to Okinawa when the large ship mooring was degraded. This also required numerous ship-to-ship operations over two months from the foreign flag tanker MT High Navigator to both ships for delivery to Okinawa.

During RIMPAC 2024, MT Allied Pacific and MT Overseas Mykonos provided CONSOL support to Combat Logistics Force and New Zealand oiler HMNZS Aotearoa (A11) transferring over 307,000 barrels. Additionally, in the Sea of Japan, MT Badlands Trader conducted CONSOL operations with Japanese oiler JMSDF Hamana (AOE 424).

MSC contracted most of the Tanker Security Program (TSP) participants to include: MT Overseas Sun Coast, MT Stena Immaculate, MT Stena Impeccable, MT Stena Imperative, MT Shenandoah Trader, MT Torm Thunder, MT Torm Timothy and MT Torm Thor. MT Shenandoah Trader became the first TSP tanker to become CONSOL certified with initial in-port ship qualification trials with the UK oiler RFA Tidespring (A136).



UNITED WE SAIL

U.S. Navy's
MILITARY SEALIFT COMMAND



75 YEARS OF MARITIME EXCELLENCE

COMBAT LOGISTICS FORCE

Fleet Replenishment Oiler



Length: 746 Feet, Beam: 106 Feet
Displacement: 49,850 Tons

T-AO 205 USNS John Lewis
T-AO 206 USNS Harvey Milk
T-AO 207 USNS Earl Warren
T-AO 208 USNS Robert F. Kennedy



Length: 678 Feet, Beam: 98 Feet
Displacement: 40,900 - 41,225 Tons

T-AO 187 USNS Henry J. Kaiser
T-AO 188 USNS Joshua Humphreys
T-AO 189 USNS John Lenthall
T-AO 194 USNS John Ericsson
T-AO 195 USNS Leroy Grumman
T-AO 196 USNS Kanawha
T-AO 197 USNS Pecos
T-AO 198 USNS Big Horn
T-AO 199 USNS Tippecanoe
T-AO 200 USNS Guadalupe
T-AO 201 USNS Patuxent
T-AO 202 USNS Yukon
T-AO 203 USNS Laramie
T-AO 204 USNS Rappahannock

Dry Cargo/Ammunition



Length: 689 Feet, Beam: 106 Feet
Displacement: 41,000 Tons

T-AKE 1 USNS Lewis and Clark (Prepositioning)
T-AKE 2 USNS Sacagawea (Prepositioning)
T-AKE 3 USNS Alan Shepard
T-AKE 4 USNS Richard E. Byrd
T-AKE 5 USNS Robert E. Peary
T-AKE 6 USNS Amelia Earhart
T-AKE 7 USNS Carl Brashear
T-AKE 8 USNS Wally Schirra
T-AKE 9 USNS Matthew Perry
T-AKE 10 USNS Charles Drew
T-AKE 11 USNS Washington Chambers
T-AKE 12 USNS William McLean
T-AKE 13 USNS Medgar Evers
T-AKE 14 USNS Cesar Chavez

Fast Combat Support



Length: 754 Feet, Beam: 107 Feet
Displacement: 48,500 Tons

T-AOE 6 USNS Supply
T-AOE 8 USNS Arctic

SPECIAL MISSION

Missile Range Instrumentation



Length: 534 Feet, Beam: 89 Feet
Displacement: 12,642 Tons

T-AGM 25 USNS Howard O. Lorenzen

Ocean Surveillance



Length: 235 Feet, Beam: 94 Feet
Displacement: 3,384 Tons

T-AGOS 19 USNS Victorious
T-AGOS 20 USNS Able
T-AGOS 21 USNS Effective
T-AGOS 22 USNS Loyal



Length: 282 Feet, Beam: 96 Feet
Displacement: 5,370 Tons

T-AGOS 23 USNS Impeccable



Length: 292 Feet, Beam: 64 Feet
Displacement: 3,911 Tons

HOS Red Rock (SURTASS-E)
HOS Red Dawn (SURTASS-E)

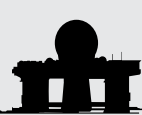
Oceanographic Survey



Length: 329 - 353 Feet, Beam: 58 Feet
Displacement: 5,000 Tons

T-AGS 60 USNS Pathfinder
T-AGS 62 USNS Bowditch
T-AGS 63 USNS Henson
T-AGS 64 USNS Bruce C. Heezen
T-AGS 65 USNS Mary Sears
T-AGS 66 USNS Marie Tharp

Sea-based X-band Radar



Length: 389 Feet, Beam: 238 Feet
Displacement: 32,690 Tons

SBX-1 Sea-based X-band Radar

Navigation Test Support



Length: 442 Feet, Beam: 69 Feet
Displacement: 12,208 Tons

T-AGS 45 USNS Waters

Submarine Support



Length: 250 Feet, Beam: 54 Feet
Displacement: 2,850 Tons

T-AGSE 1 USNS Black Powder
T-AGSE 2 USNS Westwind
T-AGSE 3 USNS Eagleview
T-AGSE 4 USNS Arrowhead

PREPOSITIONING & SEABASING

Maritime Prepositioning Force
LMSR, RO/RO, Expeditionary Transfer Dock



Length: 673 Feet, Beam: 106 Feet
Displacement: 46,111 Tons

T-AK 3009 USNS PFC Dewayne T. Williams
T-AK 3010 USNS 1ST LT Baldomero Lopez
T-AK 3011 USNS 1ST LT Jack Lummus
T-AK 3012 USNS SGT William R. Button



Length: 950 Feet, Beam: 106 Feet
Displacement: 62,644 Tons

T-AKR 302 USNS Seay
T-AKR 304 USNS Pilliaau
T-AKR 311 USNS Sisler
T-AKR 312 USNS Dahl



Length: 907 Feet, Beam: 106 Feet
Displacement: 55,123 Tons

T-AK 3017 USNS GYSGT Fred W. Stockham



Length: 784 Feet, Beam: 164 Feet
Displacement: 77,388 Tons

T-ESD 1 USNS Montford Point
T-ESD 2 USNS John Glenn

Offshore Petroleum Distribution System



Length: 349 Feet, Beam: 70 Feet
Displacement: 6,492 Tons

T-AG 5001 USNS VADM K.R. Wheeler



Length: 160 Feet, Beam: 30 Feet
Displacement: 611 Tons

T-AG 4907 USNS Fast Tempo

Cable Laying/Repair



Length: 478 Feet, Beam: 71 Feet
Displacement: 16,118 Tons

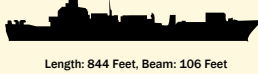
CS Global Sentinel

Army Prepositioned Stocks
LMSR and Container



Length: 950 Feet, Beam: 106 Feet
Displacement: 62,644 Tons

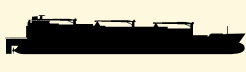
T-AKR 310 USNS Watson
T-AKR 313 USNS Red Cloud
T-AKR 314 USNS Charlton
T-AKR 315 USNS Watkins
T-AKR 316 USNS Pomeroy
T-AKR 317 USNS Soderman



Length: 844 Feet, Beam: 106 Feet
Displacement: 66,079 Tons

T-AK 4544 MV SSG Edward A. Carter Jr.

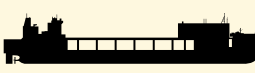
Air Force Prepositioning
Container



Length: 652 / 686 Feet, Beam: 106 / 99 Feet
Displacement: 48,012 / 52,878 Tons

T-AK 4396 MV MAJ Bernard F. Fisher
T-AK 5362 MV CAPT David I. Lyon

Expeditionary Sea Base



Length: 784 Feet, Beam: 164 Feet
Displacement: 106,664 Tons

ESB 3 USS Lewis B. Puller
ESB 4 USS Hershel "Woody" Williams
ESB 5 USS Miguel Keith
ESB 6 USS John L. Canley
ESB 7 USNS Robert E. Simanek

Submarine and Special Warfare Support



Length: 285 Feet, Beam: 60 Feet
Displacement: 3,446 Tons

OSV HOS Rosebud



Length: 310 Feet, Beam: 52 Feet
Displacement: 1,657 Tons

MV Kellie Chouest



Length: 311 Feet, Beam: 60 Feet
Displacement: 2,165 Tons

MV Alyssa Chouest

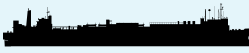


Length: 110 Feet, Beam: 22 Feet
Displacement: 600 Tons

PTV Malama

FLEET SUPPORT

Hospital



Length: 894 Feet, Beam: 106 Feet
Displacement: 69,552 Tons

T-AH 19 USNS Mercy
T-AH 20 USNS Comfort

Rescue and Salvage



Length: 255 Feet, Beam: 51 Feet
Displacement: 3,336 Tons

T-ARS 51 USNS Grasp
T-ARS 52 USNS Salvor

Submarine Tender



Length: 644 Feet, Beam: 85 Feet
Displacement: 23,000 Tons

AS 39 USS Emory S. Land
AS 40 USS Frank Cable

Fleet Ocean Tug



Length: 226 Feet, Beam: 42 Feet
Displacement: 2,296 Tons

T-ATF 168 USNS Catawba



Length: 275 Feet, Beam: 62 Feet
Displacement: 4,065 Tons

MV Gary Chouest

Command



Length: 636 Feet, Beam: 108 Feet
Displacement: 15,000 Tons

LCC 20 USS Mount Whitney

Fleet Experimentation



Length: 261 Feet, Beam: 60 Feet
Displacement: 3,183 Tons

OSV Ocean Valor



Length: 259 Feet, Beam: 75 Feet
Displacement: 2,255 Tons

SLV HOS Resolution

Expeditionary Fast Transport



Length: 338 Feet, Beam: 94 Feet
Displacement: 2,460 Tons

T-EPF 5 USNS Trenton
T-EPF 6 USNS Brunswick
T-EPF 7 USNS Carson City
T-EPF 8 USNS Yuma
T-EPF 9 USNS City of Bismarck
T-EPF 10 USNS Burlington
T-EPF 11 USNS Puerto Rico
T-EPF 12 USNS Newport
T-EPF 13 USNS Apalachicola
T-EPF 14 USNS Cody

High-Speed Transport



Length: 373 / 379 Feet, Beam: 78 Feet
Displacement: 1,646 Tons

HST 1 USNS Guam
HST 2 Formerly MV Alakai

DRY CARGO & TANKERS

Dry Cargo



Length: 443 Feet, Beam: 59 Feet
Displacement: 9,295 Tons

T-AK 5603 SLNC Star

Tankers



Length: 590-601 Feet, Beam: 106 Feet
Displacement: 55,000-62,174 Tons

T-AOT 5193 MT Empire State
T-AOT 5205 MT Evergreen State
T-AOT 5419 MT SLNC Goodwill
T-AOT 5439 MT Overseas Mykonos
T-AOT 5532 MT Yosemite Trader
T-AOT 5581 MT Allied Pacific
T-AOT 5582 MT Badlands Trader



Length: 333-357 Feet, Beam: 52-64 Feet
Displacement: 9,160-9,989 Tons

T-AOT 5356 MT SLNC Pax
T-AOT 5562 MT Haina Patriot
T-AOT 5560 MT Pohang Pioneer
T-AOT 5630 MT Redwood Trader



Length: 600 Feet, Beam: 131 Feet
Displacement: 65,200 Tons

T-AOT 5563 MT Stena Polaris

Military Sealift Command Atlantic

Military Sealift Command Atlantic (MSCLANT) executes tactical or administrative control for all MSC ships in the Western Atlantic Ocean and Gulf of Mexico and in both the Southern Atlantic and Eastern Pacific oceans surrounding Central and South America. MSCLANT develops schedules and provides all combat logistics force (CLF), service support, expeditionary fast transport (EPF), and special mission ships for Commanders, Task Force 80 and 40 as well as strategic sealift ships for Combatant Commanders. Additionally, MSCLANT/CTG 80.83 deploys CLF support to U.S. 5th and 6th Fleets as independent deployers or in direct support for all carrier strike groups deploying from CTF 80.

During FY 2024, MSCLANT maintained daily oversight of approximately 43 ships, performing missions from CLF support to strategic sealift. MSC ships in the MSCLANT area of operations loaded and discharged 470 million pounds of cargo and delivered more than 238 million gallons of petroleum products and more than 123 million pounds of net explosive weight (NEW) of ordnance. MSCLANT CLF ships supported nine deployments, six major fleet exercises and six fleet ordnance moves.

Collaborating with Norfolk’s Fleet Logistics Center and Subsistence Prime Vendors, Defense Logistics Agency (DLA) and the Officer-in-Charge of Naval Weapons Station Earle in New Jersey, MSCLANT Combat Logistics Office (CLO) facilitated 18 logistic events. This included the loading of 5,159 pallets of food, repair parts, and other materials for vessels performing replenishments-at-sea (RAS) for multiple fleet exercises and deployments. Additionally, the CLO ensured the safe and efficient on/off-loading of 11,135 pallets of ordnance, weighing more than 2.3 million pounds of NEW, and coordinated the transport of 16.6 million gallons of diesel marine fuel and JP-5 aviation fuel.

MSCLANT’s Reserve Expeditionary Port Unit supported three major prepositioning cargo operations at ports in Charleston, South Carolina, Sunny Point, North Carolina, and Earle, New Jersey.

Additionally, MSCLANT Headquarters’ reserve unit augmented and supported CLO conferences and activities in Pearl Harbor, Hawaii, watch-standings for Hurricane Exercise 2024 in Norfolk, Virginia, and provided chaplain support to a variety of U.S. naval commands within the Hampton Roads area in Virginia.

October 2023

Dry cargo and ammunition vessel USNS William McLean deployed to U.S. 6th Fleet, while fleet replenishment oiler USNS Kanawha deployed to the Middle East in a surge combat deployment with the USS Dwight D. Eisenhower (CVN 69) Carrier Strike Group (CSG). Prior to its nine-month deployment, Kanawha provided critical logistic support during the USS Wasp (LHD 1) Amphibious Ready Group’s (ARG) Surface Warfare Advance Tactical Training’s (SWATT) two-week exercise. In addition, expeditionary transfer dock (ESD) vessel USNS Montford Point became the first ESD to transit the Panama Canal’s newest locks during a trip from Portland, Oregon, to Norfolk, Virginia.



November

Fast combat support vessel USNS Supply deployed in support of Dwight D. Eisenhower CSG’s mission in 5th Fleet. Fleet replenishment oiler USNS Leroy Grumman returned to Naval Station Norfolk (NSN) after a six-month deployment with the world’s largest and most advanced aircraft carrier USS Gerald R. Ford (CVN 78). While deployed, Leroy Grumman executed 25 at-sea replenishments, delivered more than 12 million gallons of fuel, and transferred 807 pallets of critical stores and ordnance.

December

Fast combat support ship USNS Arctic, one of the Navy’s largest combat logistic ships, was recognized with the Fuel Management Excellence award under the Naval Fuel Management Recognition Program.



March

William McLean returned to NSN from its five-month deployment where it supported ships in 6th Fleet. Steaming 30,200 nautical miles in challenging European waters, William McLean delivered more than 6.2 million gallons of fuel and transferred 3,329 pallets of vital stores and ordnance. The ship’s efforts helped to increase the sustainability of our Navy warships operating in the Eastern Mediterranean Sea.



The U.S. Maritime Administration’s (MARAD) Ready Reserve Fleet vessel MV Roy P. Benavidez along with prepositioning ships USNS GYSGT Fred W. Stockham and USNS 1ST LT Baldomero Lopez set sail on a mission to construct a temporary pier to facilitate the delivery of humanitarian aid into Gaza.

April

Robert E. Peary supported amphibious warship Wasp and the 24th Marine Expeditionary Unit’s two-week composite training unit exercise (COMPTUEX) in preparation for their upcoming deployment to Europe.

USNS Harvey Milk, the second of the John Lewis-class of replenishment oilers, arrived at NSN for post-delivery tests and trials. Tug and supply vessel MV Gary Chouest supported the Naval Research Lab in testing Autonomous Underwater Vehicles before deploying to 6th Fleet for three months.

May

Two MSCLANT ships won the coveted Captain David M. Cook Foodservice Excellence Award. William McLean was a first-time winner in the large afloat category while oiler USNS Joshua Humphreys won in the medium afloat category for the third consecutive year.

June

MSC chartered heavy lift container ship MV Ocean Gladiator to support Operation Pacer Goose 2024, an annual resupply mission to Pituffik Space Base in Greenland. While Ocean Gladiator played a critical role in transporting heavy equipment, construction materials, and various supplies needed for the maintenance and expansion of the base’s infrastructure, MT Stena Polaris delivered the fuel, which ensured the base’s operational readiness for the upcoming harsh Arctic winter.

Robert E. Peary deployed to 6th Fleet in support of the Wasp ARG. Robert E. Peary planned and executed all underway replenishment and helicopter services along with other direct fleet support.

Arctic supported Harry S. Truman’s two-week SWATT, completing 18 underway replenishments-at-sea and four deck landing qualifications. Expeditionary fast transport Burlington departed on the two-month Continuing Promise (CP24) deployment in support of U.S. Southern Command’s humanitarian assistance and goodwill mission in Guatemala, Honduras, Colombia, Dominican Republic, and Haiti. Burlington’s ability to quickly transport personnel and equipment in shallow water environments and undeveloped port facilities made it ideal for this mission.

July

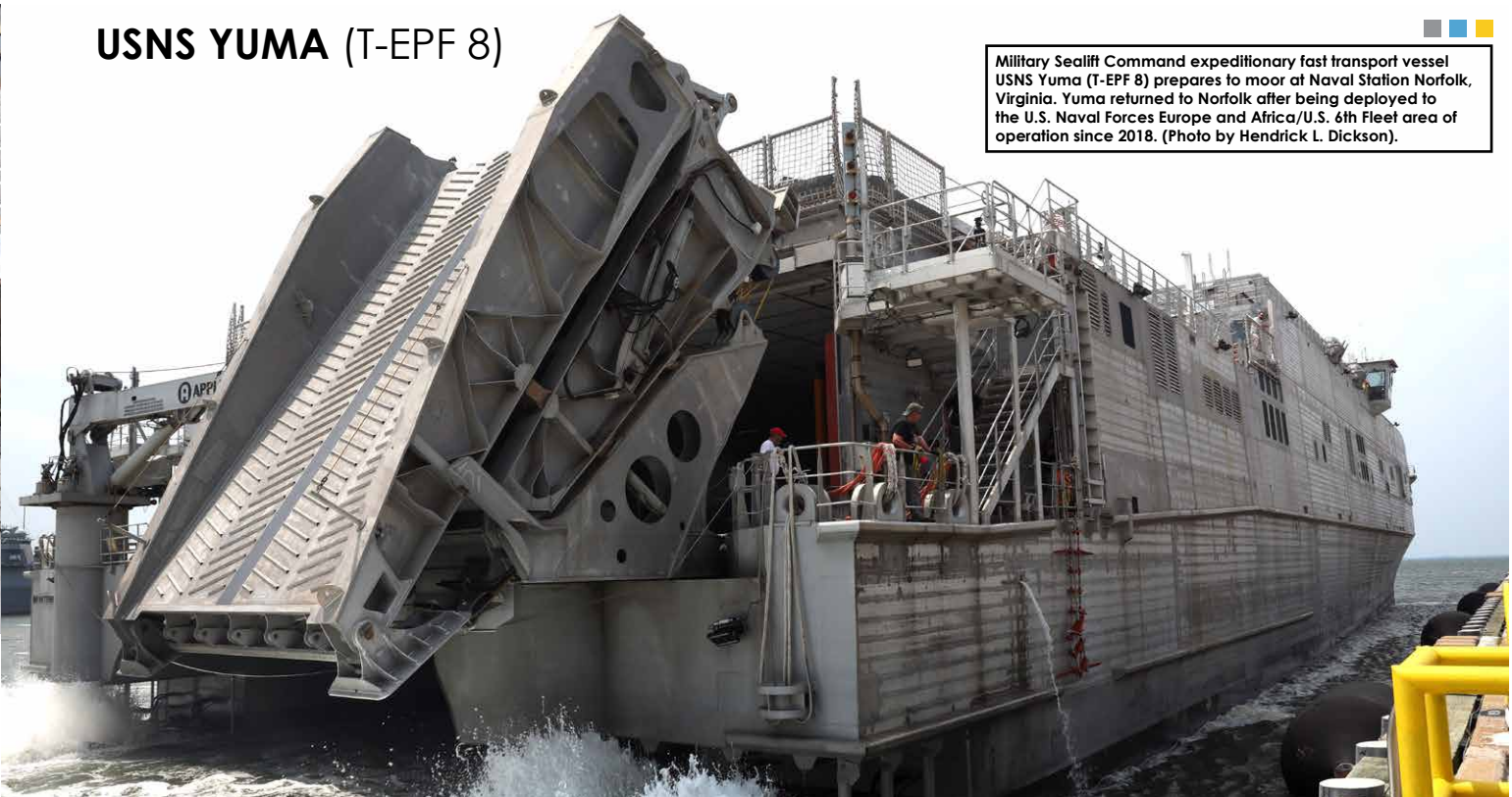
Kanawha and Supply returned to Norfolk from their nine-month deployment supporting the Dwight D. Eisenhower CSG’s response to aggression in the Red Sea. Performing in the face of extreme danger, both crews completed 254 at-sea replenishments, delivered more than 117 million gallons of diesel marine and JP-5 aviation fuel, and transferred 18,307 critical cargo pallets. Both Kanawha and Supply’s achievements were recognized by the Secretary of Navy with the Navy Unit Commendation (NUC) award.

Arctic supported the Harry S. Truman CSG COMPTUEX by providing on-time logistics services throughout the two-week event. William McLean supported both the ordnance upload for Gerald R. Ford and Harry S. Truman and the ordnance download for Dwight D. Eisenhower.



U.S. Army Soldiers assigned to the 7th Transportation Brigade (Expeditionary) and Sailors attached to the MV Roy P. Benavidez assemble the Roll-On, Roll-Off Distribution Facility, or floating pier, off the shore of Gaza. (U.S. Army photo by 1st Lt. Hudson Kay)

USNS YUMA (T-EPF 8)



Military Sealift Command expeditionary fast transport vessel USNS Yuma (T-EPF 8) prepares to moor at Naval Station Norfolk, Virginia. Yuma returned to Norfolk after being deployed to the U.S. Naval Forces Europe and Africa/U.S. 6th Fleet area of operation since 2018. (Photo by Hendrick L. Dickson).

Expeditionary fast transport USNS Cody conducted its first Expeditionary Medical Unit (EMU) embarkation exercise and firefighting system testing. Expeditionary fast transport USNS Yuma returned to Norfolk, Virginia, after being forward deployed for six years in 6th Fleet.

August

MV Ocean Gladiator completed its four-day retrograde offload in Norfolk, Virginia, which brought the 2024 Pacer Goose mission to a close. Burlington completed CP24, which marked the conclusion of the Navy’s fourteenth mission in U.S. Southern Command’s AOR since 2007. MV Roy P. Benavidez, USNS GYSGT Fred W. Stockham, and USNS 1st LT Baldomero Lopez completed their mission to provide humanitarian support via an expeditionary pier system off Gaza. Together the ships delivered 21,706 pallets of humanitarian aid and 18,455 metric tons of equipment and stores for transit to Gaza.

September

After completing CP24, Burlington returned to Key West, Florida, where the vessel performed a series of Navy Fleet experimentations and unmanned aerial vehicle tests. MV Gary Chouest towed ex-USS Vicksburg to Philadelphia. During a ceremony with crew-members and family, Supply was presented with its NUC award for performance during their nine-month deployment in the Red Sea.



An Integrator UAS is retrieved from an arresting line, which had been held aloft vertically by a FLARES unit for recovery of the UAS during the 2024 Hybrid Fleet Campaign Event aboard Spearhead-class expeditionary fast transport ship USNS Burlington (T-EPF 10) in the Atlantic Ocean. (U.S. Navy photo by Chief Mass Communication Specialist John R. Fischer)



Andrew Lindsey, USNS Supply (T-AO 6) Master, displays the unit award during a ceremony on board Supply. Supply was awarded the Navy Unit Commendation as the fast combat support ship assigned to the USS Dwight D. Eisenhower (CVN 69) Carrier Strike Group to support sustained combat operations in the Red Sea and surrounding waters. (U.S. Navy photo by Ryan Carter)



Sailors assigned to the Arleigh Burke-class guided-missile destroyer USS Jason Dunham (DDG 109), lay out slack on the messenger line to send it back to the Supply-class fast combat support ship USNS Arctic (T-AOE 8), while doing a replenishment-at-sea during Composite Training Unit Exercise (COMPTUEX). (U.S. Navy photo by Mass Communication Specialist 3rd Marieliza Rosales)

Military Sealift Command Pacific

Military Sealift Command Pacific (MSCPAC) exercises tactical control over Military Sealift Command (MSC) ships in the U.S. 3rd Fleet area of operations in the Eastern Pacific from the U.S. West Coast to the International Dateline and during a limited number of operations across the International Date Line. During FY 2024, MSCPAC ships delivered fuel, food, supplies and ammunition to U.S. Navy ships, performed a variety of special missions, and transported vital military cargo to and from U.S. and allied nations.

October 2023

Hospital ship USNS Mercy departed San Diego marking the beginning of Pacific Partnership 2024, the annual maritime humanitarian and civic assistance mission focused on improving disaster response preparedness, resiliency and capacity with participating nations and civilian humanitarian organizations throughout Southeast Asia.

November

Rescue and salvage ship USNS Grasp delivered the decommissioned Ticonderoga-class guided-missile cruiser USS Bunker Hill (CG 52) to the Navy Inactive Ship Maintenance Facility (NISMF) Bremerton, Washington. Ex-Bunker Hill was the third ship in its class towed by Grasp to the NISMF, following ex-Mobile Bay and ex-Lake Champlain tows in August and September.

December

Navy reservists from MSCPAC's Expeditionary Port Unit (EPU) 114 conducted cargo operations in Port Hueneme, California, overseeing the loadout of supplies and equipment onto the charter ship MV Ocean Gladiator in preparation for delivery to the Antarctica outpost of McMurdo Station in support of the annual resupply mission Operation Deep Freeze (ODF).

Serving as liaisons between the Navy and the crew of the ship and stevedores on the pier, the EPU 114 reservists coordinated the loadout of 407 pieces of cargo, consisting of containers filled with mechanical parts, vehicles, construction materials, office supplies and electronics equipment, supplies needed for the year's operation at McMurdo Station, Antarctica.

Operation Deep Freeze is a joint service, on-going Defense Support to Civilian Authorities activity in support of the National Science Foundation (NSF), lead agency for the United States Antarctic Program. Mission support consists of active duty, Guard and Reserve personnel from the U.S. Air Force, Navy, Army, and Coast Guard as well as Department of Defense civilians and attached non-DOD civilians. ODF operates from two primary locations situated at Christchurch, New Zealand, and McMurdo Station, Antarctica. An MSC-chartered cargo ship and tanker have made the voyage to Antarctica every year since the station and its resupply mission were established in 1955.



The hospital ship USNS Mercy (T-AH 19) gets underway in support of Pacific Partnership 2024-1 from Naval Base San Diego. Pacific Partnership, now in its 19th iteration, is the largest multinational humanitarian assistance and disaster relief preparedness mission conducted in the Indo-Pacific. (U.S. Navy photo by Mass Communication Specialist 2nd Class David Negron)



The cargo ship Ocean Gladiator transfers cargo between the ship and McMurdo Station prior to being escorted through the ice channel by the Coast Guard Cutter Polar Star (WAGB 10) in the McMurdo Sound, Antarctica. Every year, a joint and total force team works together to complete a successful Operation Deep Freeze mission. (U.S. Coast Guard photo by Petty Officer 2nd Class Ryan Graves)

January 2024

MSC chartered tanker ship MT Acadia Trader departed the British Petroleum Refinery, Cherry Point, near Bellingham, Washington, where the ship loaded over 7 million gallons of a special blend of diesel fuel mixed specifically for Antarctica, 1.5 million gallons of aviation fuel, and 155 thousand gallons of gasoline, all the fuel needed to operate at the remote outpost.

February

Ocean Gladiator and Acadia Trader conducted cargo delivery missions at the McMurdo Station, Antarctica, ice-pier in support of ODF 2024.

More than 800 service members and Civil Service Mariners returned to San Diego on Mercy, completing the Pacific Partnership 2024 humanitarian mission in the Indo-Pacific. This year's mission included stops in the Republic of the Marshall Islands, Solomon Islands, the Republic of Palau and two states in the Federated States of Micronesia, Pohnpei and Chuuk. Pacific Partnership medical personnel alongside the host nation medical teams and partner nations performed over 410 surgeries both aboard Mercy and at host nation hospitals. Additionally, the dental team saw 3,665 patients and the optometry team saw 7,025 patients.

The Navy commissioned expeditionary sea base (ESB) USS John L. Canley at Naval Air Station North Island, San Diego. The ship honors Sgt. Maj. John L. Canley, a United States Marine who distinguished himself in battle during the Vietnam war, in 1968, during the Battle of Huế. John L. Canley is the fourth ESB, a highly flexible platform that provides logistics movement from sea to shore supporting a broad range of military operations.



USS John L. Canley (ESB 6) enters San Diego Harbor. The latest expeditionary sea base is named for Marine Corps Sgt. Maj. John L. Canley who was awarded the Medal of Honor in 1968 for his actions in 1968 during the battle of Hue City, Vietnam. (U.S. Navy photo by Chief Mass Communication Specialist Mark D. Faram)

March

Ocean Gladiator marked the end of its support of ODF with a stop in Port Hueneme, California, where it conducted cargo offload of retrograde materials, including station waste and recyclables returned from McMurdo station, as well as ice-core samples that will be used in scientific study.

April

At Naval Base San Diego, crew from dry cargo and ammunition ship USNS Richard E. Byrd and the Mexican Navy frigate ARM Benito Juarez (POLA 101) shared information during in-port training for underway replenishment (UNREP) operations at-sea. During the training, the two ships simulated conditions at-sea and conducted full UNREP procedures sending lines from one ship to another, sending and receiving the fuel hoses, and disconnecting the lines and returning them to Richard E. Byrd. Throughout the operation, both ships were conducting communications, providing readings and bearings the same way they would during an underway, real-world scenario. The training was a lead-up to the Mexican Navy's conducting logistics operations during the Rim of the Pacific 2024 multi-national maritime exercise.

MSCPAC's commanding officer, Capt. Micah Murphy, joined employees of MSC and General Dynamics NASSCO of San Diego to celebrate the keel laying of expeditionary sea base USNS Hector A. Cafferata, Jr. at the NASSCO shipyard San Diego. The time-honored tradition of the keel laying marks the official start of ship construction, where the sponsors Heather and Jessica Cafferata, the daughter and granddaughter of the ship's namesake, welded their initials into the keel plate of the new ship. Hector A. Cafferata is the sixth ship of the ESB variant of the expeditionary transfer dock platform.

May

The Navy christened expeditionary sea base USNS Robert E. Simanek during a ceremony at the General Dynamics NASSCO shipyard in San Diego.

MSC took delivery of its newest fleet replenishment oiler USNS Earl Warren from shipbuilder General Dynamics NASSCO in San Diego. Earl Warren is the third ship in the new John Lewis-class oilers.

June

Family members and friends experienced life at-sea on a ship as they participated in a family cruise, also known as a Tiger Cruise, onboard Richard E. Byrd in the Pacific Northwest. Twenty-four Tigers, made up of family members, and students and faculty from the Seattle Maritime Academy, boarded the ship in Everett, Washington, and spent the day sailing to Naval Magazine Indian Island, Washington.

During the transit, the riders were able to see how the ship operates from the engine room and the bridge. The riders watched as the harbor pilot embarked from a tugboat, and observed line handling operations as the ship departed and returned to port.

Fleet replenishment oiler USNS Pecos provided logistics services to the ships of the USS Abraham Lincoln Carrier Strike Group as they conducted routine, pre-deployment training operations in the Pacific area of operations. Through a series of 33 replenishments-at-sea, Pecos delivered 567 pallets of food, parts, equipment and mail. In addition, the ship delivered 4.4 million gallons of diesel ship fuel and 3.2 million gallons of JP5 aviation fuel. MSCPAC staff and employees from General Dynamics NASSCO San Diego celebrated the keel laying of MSC's newest ship, fleet replenishment oiler USNS Sojourner Truth.

July/August

In the waters around Hawaii, MSC supported the world's largest, biennial international maritime exercise, Rim of the Pacific 2024, providing logistic services to 29 nations and 40 surface ships participating in the exercise, as well as delivering targets for live-fire exercises.

Pecos and dry cargo and ammunition ship USNS Washington Chambers delivered nearly 4 million gallons of diesel ship fuel, one million gallons JP5 aviation fuel, and 1,256 pallets of food, dry stores, mechanical parts, supplies and mail to U.S. Navy, Coast Guard, and foreign navies' through a series of 101 replenishment-at-sea evolutions.



The Indonesian Navy frigate KRI Raden Eddy Martadinata (331) conducted a replenishment-at-sea with the Henry J. Kaiser-class fleet replenishment oiler USNS Pecos (T-AO 197) during Rim of the Pacific 2024. (Indonesian Navy courtesy photo)



At Joint Base Pearl Harbor-Hickam, Hawaii, pallets of subsistence and materials are loaded onto the Military Sealift Command ship USNS Washington Chambers (T-AKE 11) for a replenishment-at-sea with the USS Carl Vinson (CVN 70) which is participating in the Rim of the Pacific 2024 exercise. (Courtesy Photo)

The MSC combat logistics force (CLF) ships received fuel through a series of consolidated cargo operations (CONSOLs) with two chartered tankers, Overseas Mykonos and Allied Pacific. The two tankers delivered over 2 million gallons of aviation fuel and diesel marine fuel through 17 CONSOLs with the CLF ships and to the New Zealand Navy's Polar-class sustainment vessel HMNZS Aotearoa (A11).

Rescue and salvage ship USNS Grasp delivered two decommissioned Navy ships, amphibious transport dock ex-USS Dubuque (LPD 8) and amphibious assault ship ex-USS Tarawa (LHA 1), to the designated target areas in preparation for live fire and sinking exercises.

Ashore, members of the MSCPAC Headquarters Unit provided maritime logistic support. Alongside their international teammates, these Reservists provided comprehensive planning and coordination for each replenishment-at-sea conducted during the exercise, including arranging and coordinating rendezvous locations and times for all the MSC ships.

September

The Navy christened fleet replenishment oiler USNS Lucy Stone during a ceremony at the General Dynamics NASSCO shipyard in San Diego, California. Lucy Stone, the fifth ship in the John Lewis-class, honors American suffragist Lucy Stone, who joined other notable advocates such as Elizabeth Cady Stanton, Susan B. Anthony, Ernestine Rose, and Antoinette Brown Blackwell to petition for suffrage and abolition in the 19th century.

Fleet replenishment oiler USNS Lucy Stone (T-AO 209) slides down the rails and into the San Diego Bay during the christening ceremony at the General Dynamics NASSCO shipyard. (Courtesy Photo)



Military Sealift Command auxiliary rescue and salvage ship, USNS Grasp (T-ARS 51), alongside the decommissioned Navy amphibious transport dock ex-Dubuque (LPD 8), at the Naval Inactive Ship Maintenance Facility (NISMF) in Bremerton, Washington, prepares to connect for a tow to the Hawaiian operation area in support of Rim of the Pacific 2024. (Courtesy Photo)



USNS LUCY STONE (T-AO 209)

Naples, Italy

Military Sealift Command Europe and Africa

Military Sealift Command Europe and Africa (MSCEURAF) directs ships that support U.S. European Command, U.S. Africa Command and U.S. Transportation Command. The MSCEURAF staff also supports Commander, Task Force 63 (CTF 63) under U.S. 6th Fleet. MSCEURAF supports ships deployed to or transiting through the region to conduct combat logistics, theater security cooperation, oceanographic survey, rescue and salvage, maritime prepositioning and sealift operations.

During FY 2024, MSCEURAF coordinated sustainment operations between 18 MSC vessels and 26 U.S. Navy and partner nation ships in the U.S. European Command and U.S. Africa Command areas of responsibility. Ships from MSCEURAF participated in numerous exercises in support of U.S. Navy, Department of Defense and NATO allies and partners throughout Europe and Africa. These engagements spanned the globe from exercise Baltic Operations in the far north to exercises Sea Lion, Obangame Express and various additional training evolutions off both coasts of sub-Saharan Africa.



U.S. Army Soldiers assigned to the 7th Transportation Brigade (Expeditionary) secure the Roll-On, Roll-Off Distribution Facility, or floating pier, to the side of the MV Roy P. Benavidez (T-AKR-306) off the coast of Gaza. (U.S. Army photo by Staff Sgt. Mikayla Fritz)

provided more than 43.5 million gallons of fuel to U.S. Navy, allied and partner ships over 291 replenishments-at-sea. More than one third of these fueling evolutions supported partner nations Belgium, Canada, Spain, France, Germany, Italy, Norway, Portugal, Turkey, the Netherlands and the United Kingdom.

Additionally, the MSCEURAF team and regional shipyard partners completed 18 dry docking and maintenance availabilities, as well as 44 emergent repairs.

October 2023

Dry cargo and ammunition ship USNS Medgar Evers conducted two separate underway replenishments with the Italian Navy Carlo Bergamini-class frigate ITS Virginio Fasan (F 594), providing more than 136,000 gallons of fuel to Virginio Fasan while the frigate was integrated with the USS Dwight D. Eisenhower (CVN 69) Carrier Strike Group.

November

The Henry J. Kaiser-class underway replenishment oiler USNS Laramie conducted an underway replenishment with the Greek MEKO 200-class frigate HS Psara, providing the Greek ship with more than 35,000 gallons of fuel.

December

Dry cargo and ammunition ship USNS William McLean, conducted a replenishment-at-sea (RAS) with the Italian Carlo Bergamini-class frigates, Carlo Bergamini (F 590) and Virginio Fasan (F 591). The RAS was just one of the underway replenishments completed by William McLean while the ship served as the primary CLF vessel assigned to the USS Gerald R. Ford (CVN 78) Carrier Strike Group and USS Bataan (LHD 5) Amphibious Readiness Group in the Mediterranean Sea.

January 2024

The Spearhead-class expeditionary fast transport ship USNS Trenton made port in Durrës, Albania, as part of the ship’s deployment to the theater in support of U.S. Africa Command (AFRICOM) tasking. Trenton also made stops in Algiers, Algeria, and Naples, Italy, while in the region. William McLean conducted an underway replenishment with the Royal Netherlands Navy patrol vessel HNLMS Holland (P840), providing the Dutch ship with more than 38,000 gallons of fuel.

February

U.S. East Coast-based Naval Special Warfare and Special Warfare Combatant-Craft Crewmen teams collaborated with Cypriot Navy Underwater Demolition Team (MYK) partners in close quarters clearance and site exploitation exercises launched from the expeditionary fast transport ship USNS Yuma. The Lewis B. Puller-class expeditionary mobile base (ESB) USS Hershel “Woody” Williams departed Rijeka, Croatia, after a maintenance availability. The ship also completed Mobility Air Qualifications (MOB-A) designed to ensure all flight team members are properly trained to conduct safe and efficient flight operations. Additionally, Hershel “Woody” Williams executed a crew swap during a port visit to Rota, Spain.

March

Hershel “Woody” Williams partnered with the Ghana Navy to execute exercise Sea Lion 2024. The ship kicked off the exercise with a port visit to Tema, Ghana, and participated in a Flagging Off ceremony, attended by the U.S. Ambassador to Ghana, Hon. Virginia Palmer, Ghanaian Chief of Defense and Ghanaian Chief of Naval Staff. While steaming in formation with the Ghana Navy Ships GNS Ankobra and GNS Volta, the ships transited through the intersection of the Prime Meridian and the Equator, giving crew members from both Navies a chance to participate in a “crossing the line” ceremony. Five Ghana Navy Sailors were aboard Hershel “Woody” Williams, while one U.S. Sailor was aboard each of the Ghana Navy vessels.

April

The Blue Ridge-class amphibious command ship USS Mount Whitney hosted NATO’s 75th Anniversary celebration and reception. The ship also conducted three days of public ship tours for the Naples community. Hershel “Woody” Williams strengthened interoperability and increased allied capabilities with evolutions conducted with the Nigerian Navy Ship Kada (LST-100). The ships conducted tactical signals maneuvering over bridge-to-bridge communications, as well as used Morse code for a communications exercise. Hershel “Woody” Williams and Kada also participated in a ship rider exchange via small boats with each ship sending four crewmembers to the partner vessel. Hershel “Woody” Williams also partnered with the Italian Navy ship ITS Comandante Bettica (P 492) and an SH-212 Italian Navy Helicopter, conducting fast rope exercises, deck landing qualifications and passenger transfers. Comandante Bettica’s Visit Board Search & Seizure (VBSS) team executed a drill aboard Hershel “Woody” Williams with the ship’s Antiterrorism Training Team acting as safety observers as well as an opposition force.



LEFT: An Italian Marine fast-ropes from a shipborne SH-212 helicopter of Italian Navy Ship Offshore Patrol Vessel ITS Bettica (P 492) onto the Lewis B. Puller-class expeditionary sea base USS Hershel “Woody” Williams (ESB 4). (U.S. Navy photo by Mass Communication Specialist 2nd Class Ethan Jaymes Morrow) RIGHT: Italian Marines move in formation during a visit, board, search, and seizure training exercise aboard the Lewis B. Puller-class expeditionary sea base USS Hershel “Woody” Williams (ESB 4). Hershel “Woody” Williams is on a scheduled deployment in the U.S. Naval Forces Africa area of operations, employed by U.S. Sixth Fleet to defend U.S., Allied and partner interests. (U.S. Navy photo by Mass Communication Specialist 2nd Class Ethan Jaymes Morrow)

May

During Memorial Day weekend Mount Whitney held a remembrance ceremony while anchored off the coast of Omaha Beach in Normandy, France, to mark the 80th anniversary of the D-Day landings of June 6, 1944. Hershel “Woody” Williams conducted a Key Leader Engagement and port visit in Libreville, Gabon, in support of exercise Obangame Express 2024. The ship hosted a distinguished visitor day which included a reception attended by the U.S. Ambassador to Gabon, Hon. Vernelle FitzPatrick.

June

Hershel “Woody” Williams arrived in Malaga, Spain, to begin a five-week voyage repair. Mount Whitney participated in BALTOPS supporting U.S. European Command and Naval Striking and Support Forces NATO. As part of the exercise, the ship made port calls in Klaipeda, Lithuania, and Kiel, Germany. The Kiel visit also coincided with the Kiel International Seapower Symposium.

USS MOUNT WHITNEY (LCC 20)



Military Sealift Command Civil Service Mariners move the aft flag pole during sea and anchor detail aboard the Blue Ridge-class command and control ship USS Mount Whitney (LCC 20) as it departs Gaeta, Italy. Mount Whitney, the U.S. 6th Fleet flagship, is on a scheduled deployment in the U.S. Naval Forces Europe area of operations. (U.S. Navy photo by Mass Communication Specialist 2nd Class Mario Coto)

July

Capt. Todd B. Penrod relieved Capt. Kenneth S. Pickard as commodore, Commander, Task Force (CTF) 63 and Military Sealift Command Europe and Africa during a change of command ceremony at Naval Support Activity Naples, Italy, July 10.

August

Hershel “Woody” Williams made a port call in Luanda, Angola, to conduct key leader engagements, and take on fuel and supplies. The ship also completed day and night deck landing qualifications with two MV-22B Osprey aircraft from the Crisis Response Africa 24.2 Air Combat Element off the coast of Kenya and Kismayo, Somalia.

September

Medgar Evers executed a short-notice underway replenishment request in support of USS Bulkeley (DDG 84) enabling Bulkeley to remain on station. Hershel “Woody” Williams conducted VBSS drills with the Kenyan Navy Ship Shujaa, as served as the boarding vessel for the Kenyan VBSS team. The ship also pulled into Mombasa, Kenya, to conduct Key Leader Engagements and take on fuel and supplies. During the visit, Hershel “Woody” Williams also hosted a distinguished visitor reception attended by the U.S. Ambassador to Kenya, Hon. Margaret “Meg” Whitman and various Kenyan dignitaries. Mount Whitney served as the venue for the Commander, U.S. 6th Fleet change of command.

Manama, Bahrain

Military Sealift Command Central

Military Sealift Command Central (MSCCENT) represents Military Sealift Command (MSC) interests in the Central Command Area of Responsibility (AOR) including the Arabian Gulf, Arabian Sea, Gulf of Oman, Horn of Africa, Gulf of Aden, and the Red Sea. Commander, MSCCENT is dual-hatted as Commander, Logistics Forces U.S. Naval Forces Central Command and exercises tactical command of U.S. 5th Fleet air and sea logistics assets. MSCCENT provides special mission support and maritime services to meet U.S. Central command requirements. Specifically, Commander, Task Force (CTF) 53 provides reliable and efficient at-sea combat logistics to ensure free flow of commerce through nearly 2.5 million square miles of water area and three major maritime chokepoints.

During FY 2024, Combat Logistics Force (CLF) vessels delivered thousands of pallets of stores, supplies, ammunition, and transferred more than 60 million gallons of petroleum products directly to U.S. Navy and partner nation ships and distribution depots across the region.

October 2023

Dry cargo and ammunition ship USNS Amelia Earhart operated in the Gulf of Oman providing continuous CLF support to surface combatants. Ship support totaled 2.3 million gallons of fuel and 1,312 pallets of provisions and supplies.

MSC-chartered tanker MT Overseas Mykonos entered 5th Fleet to deliver a load of fuel to Salalah, Oman, and then returned to 7th Fleet. Voyage charter tanker MT Grand Ace6 loaded fuel in Salalah, Oman, and delivered it to Fujairah, United Arab Emirates.

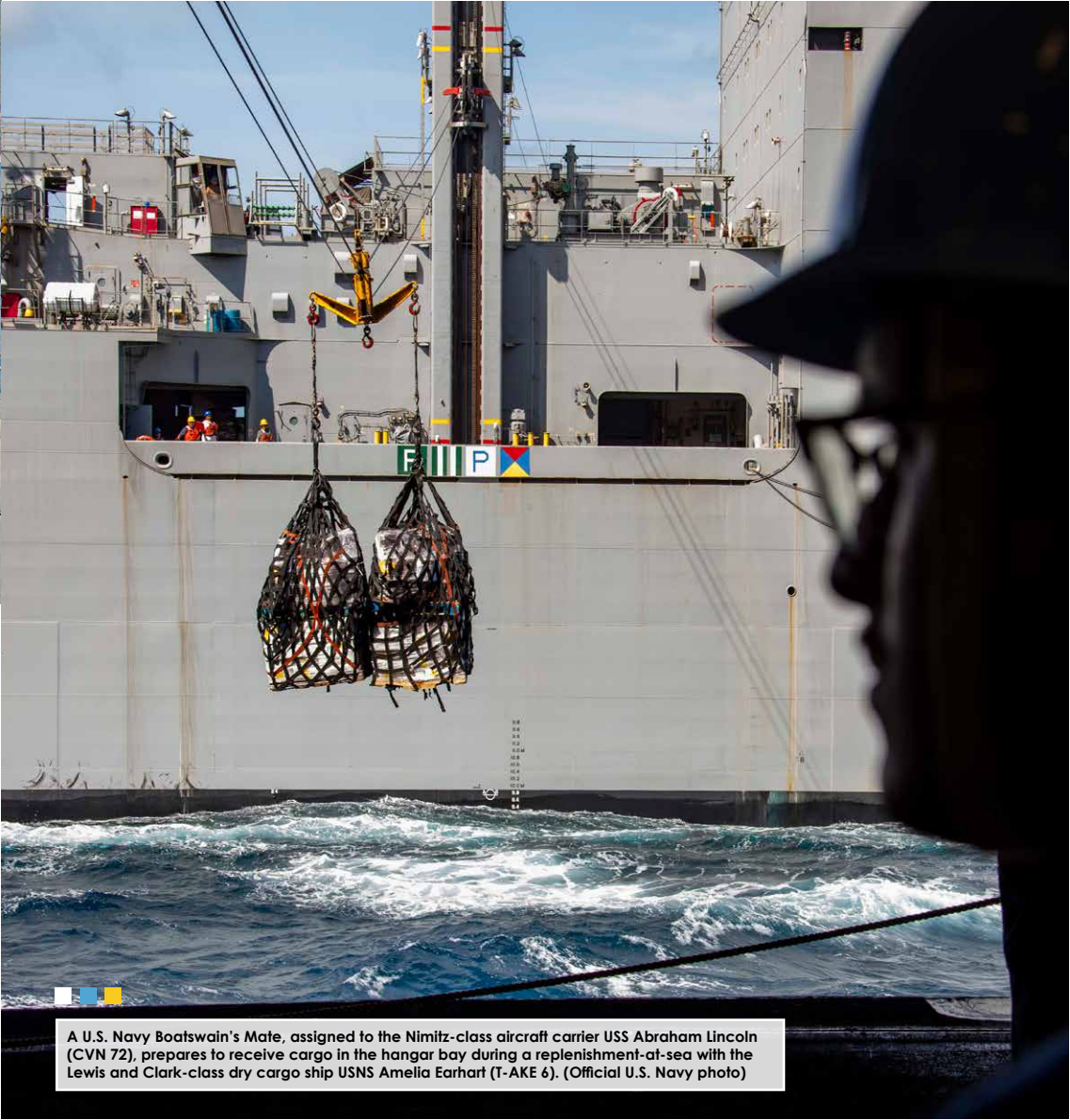
Expeditionary fast transport USNS Brunswick supported 5th Fleet missions operating in the Northern Arabian Sea.

November

MSCCENT HQ and CLF ships commenced support for the first Carrier Strike Group (CSG) to visit 5th Fleet in over two years. Area command staff provided support for the USS Dwight D. Eisenhower (CVN 69) CSG initial port visit in theater and welcomed fleet oiler USNS Kanawha and fast combat support ship USNS Supply to the region. MSCCENT CLF ships provided over 6.4 million gallons of fuel to the CSG and surface combatants, as well as a total of 877 pallets of food and mail.

December

Amelia Earhart provided CLF support to the USS Bataan (LHD 5) Expeditionary Strike Group (ESG) in the Northern Red Sea. Dry cargo and ammunition ship USNS Alan Shepard provided support to the Dwight D. Eisenhower CSG in the Northern Arabian Sea. Kanawha and Supply provided continuous support totaling 10.7 million gallons of fuel delivered to the CSG and 5th Fleet surface combatants. CLF ships also delivered 3,736 total pallets of provisions and mail.



A U.S. Navy Boatswain's Mate, assigned to the Nimitz-class aircraft carrier USS Abraham Lincoln (CVN 72), prepares to receive cargo in the hangar bay during a replenishment-at-sea with the Lewis and Clark-class dry cargo ship USNS Amelia Earhart (T-AKE 6). (Official U.S. Navy photo)



A U.S. Sailor aboard the Arleigh Burke-class guided-missile destroyer USS Laboon (DDG 58) signals the Henry J. Kaiser-class fleet replenishment oiler USNS Kanawha (T-AO 196) during a replenishment-at-sea in the Red Sea. (Official U.S. Navy photo) RIGHT: Sailors receive cargo aboard the Arleigh Burke-class guided-missile destroyer USS Gravely (DDG 107) during an underway replenishment with USNS Kanawha in the Red Sea. (Official U.S. Navy photo)

January 2024

Kanawha relieved Amelia Earhart as the CLF ship in the Red Sea. Following the relief, Amelia Earhart completed a routine overhaul (ROH) in Dubai, United Arab Emirates, at the Dubai Dry-Docks World, which ensured ship readiness to provide CLF support.

Contract ships MV Ocean Jazz and MT Torm Thunder provided dry cargo and fuel resupply support to the AOR.

February

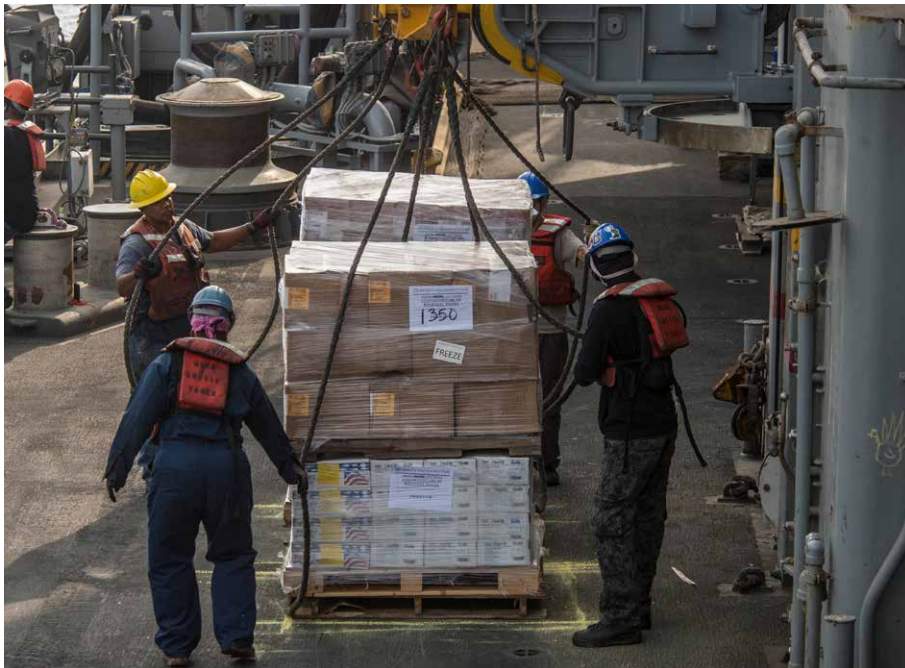
MSC ships provided 6.4 million gallons of JP5 aviation fuel and 1.7 million gallons of diesel marine fuel. A total of 2,501 pallets of food, provisions, and mail were delivered to the surface fleet. Kanawha and Alan Shepard operated in the Red Sea while Amelia Earhart and expeditionary sea base USS Lewis B. Puller operated in the Arabian Gulf. MV Ocean Jazz conducted munitions movements while MT Torm Thor moved fuel in theater.

March

Kanawha, Supply, and Alan Shepard continued to provide CLF support in the Red Sea. Lewis B. Puller performed a vessel repair availability in Jebel Ali to ensure readiness for operations. A total of 8.5 million gallons of fuel and 2,811 pallets of provisions and mail were delivered to 5th Fleet combatants. Tankers MT Torm Thor and MT Torm Thunder provided additional contracted support moving fuel around the region.

April

Contract tanker MT Stena Polaris conducted consolidated cargo operations (CONSOL) support in the Red Sea. Sealift ships MV Roy P. Benavidez, USNS 1ST LT Baldomero Lopez, USNS 2ND LT John P. Bobo, and charter MT Torm Timothy provided additional logistical supply support in the Mediterranean Sea and 5th Fleet area. In total, 4.9 million gallons of fuel and 1,549 total pallets of mail, provisions and food were delivered to the CSG and surface combatants.



Civil Service Mariners aboard the fast combat support ship USNS Arctic (T-AOE 8) prepare to send cargo to the aircraft carrier USS Dwight D. Eisenhower (CVN 69) during a replenishment-at-sea. Arctic deployed supporting coalition maritime forces ships in the U.S. 5th Fleet area of operations. (U.S. Navy photo by Petty Officer 3rd Class Cole Keller)



Sailors aboard the Arleigh Burke-class guided missile destroyer USS Russell (DDG 59) receive supplies from the Henry J. Kaiser-class replenishment oiler USNS Big Horn (T-AO 198) during a replenishment-at-sea. (Official U.S. Navy photo)

May

Supply, Alan Shepard, Kanawha, and fleet ocean tug USNS Catawba operated in the Red Sea supporting the CSG and other surface combatants. Lewis B. Puller conducted operations in the Gulf of Oman while Alan Shepard conducted an ammunition transfer to surface combatants in the Red Sea. CLF ships provided a total of 4.2 million gallons of fuel and 1,824 total pallets of food, provisions, and mail. MT Stena Polaris operated as a CONSOL tanker supporting the CLF and CSG in the Red Sea.

June

The Dwight D. Eisenhower CSG departed 5th Fleet. Kanawha, Supply and Alan Shepherd collectively provided over 50 million gallons of fuel, 8,000 pallets of food, and 7,000 pallets of cargo and mail. MT Stena Polaris continued CONSOL tanker support in the region. Catawba conducted a towing exercise in the Arabian Gulf.

July

The USS Theodore Roosevelt (CVN 71) CSG arrived in 5th Fleet, receiving support from Alan Shepherd and replenishment oiler USNS Big Horn. CLF vessels provided continuous replenishment support in the Arabian Gulf. Lewis B. Puller performed a maintenance availability period in Bahrain, ensuring future readiness to support operations.

August

Alan Shepherd, Amelia Earhart, and Big Horn provided continuous replenishment support to the USS Abraham Lincoln (CVN 72) CSG and surface combatants in the Arabian Gulf throughout the month, providing 2.6 million gallons of fuel, and 2,215 pallets of provisions and mail. Catawba participated in a minesweeping exercise with maritime partners in the vicinity of Bahrain, rehearsing a critical capability keeping shipping lanes open in the Arabian Gulf.

September

The Theodore Roosevelt CSG departed 5th Fleet. Collectively the CLF provided 3.7 million gallons of fuel, 3,000 pallets of food and mail in support of the CSG. Catawba performed a maintenance availability in Bahrain ensuring readiness to support salvage operations upon completion. Tanker MT Overseas Mykonos arrived in theater as a CONSOL tanker.



UNITED WE SAIL

Military Sealift Command Far East

Military Sealift Command Far East (MSCFE) exercises administrative control over MSC ships that support U.S. Indo-Pacific Command, U.S. Transportation Command and U.S. Navy 7th Fleet. MSCFE is co-located with Commander, Logistics Group, Western Pacific, and Task Force 73 at Sembawang Wharves in Singapore. MSCFE ensures that ships operating in the Indo-Pacific Region are manned, trained, and equipped to deliver essential supplies, fuel, cargo, and equipment to warfighters, conducting unique missions at sea and on shore. Ships which make up Maritime Prepositioning Ship Squadrons Two and Three ensure essential equipment and supplies are strategically prepositioned to facilitate rapid availability of these items to U.S. forces deployed throughout the Indo-Pacific Region.



December

The crew of expeditionary sea base USS Miguel Keith and members of MSCFE staff undertook a community relations event at the Learning Center of the Human Help Network in Pattaya, Thailand. While the ship was in maintenance, CIVMARS travelled to the Learning Center in Pattaya for a day of fun and games with the children, which was facilitated by Navy League Siam in Pattaya.

MSC replenishment oiler USNS John Ericsson and MSCFE staff visited the Social Development Center in Olongapo City, Philippines, to participate in a community outreach event during a routine port visit at Subic Bay Metropolitan Authority in Olongapo. A team of 13 CIVMARS from John Ericsson visited the center to deliver donations that included toys, clothes, snacks, and supplies.

October 2023

MSC commercial charter oiler MT Acadia Trader conducted ships qualification training (SQT) with Japanese Maritime Self-Defense Force (JMSDF) oiler JM Oumi (AO-426) in which the ships performed a simulated consolidated cargo replenishment-at-sea (CONSOL), in the Sea of Japan, west of Kyusyu. The SQT marked the first time an MSC-chartered commercial vessel connected with a JMSDF ship, further increasing interoperability between the allies.

November

MSC Civil Service Mariners and Sailors operating in the Indo-Pacific Region and during a port visit at Sembawang Wharves, Singapore, received care packages from the American community in Singapore. Students and their families from the Stamford American Internal School in Singapore, and members of the American Association in Singapore prepared and delivered more than 120 packages to the deployed members supporting the U.S. 7th Fleet, just in time for the Thanksgiving holiday.



Dry cargo and ammunition ship USNS Matthew Perry conducted a CONSOL-at-sea with the MSC chartered ship motor tanker Badlands Trader in the vicinity of Okinawa, Japan. During the CONSOL, Matthew Perry received about 335 thousand gallons of JP5 aviation fuel (7,300 barrels) that will be transferred to Navy combat logistics force (CLF) ships in the Indo-Pacific area of operations. Badlands Trader is a commercial oil tanker that has been chartered and outfitted to pump fuel to CLF ships at sea, which allows the CLF to stay closer to the fleet.



January 2024

MSC Far East hosted members of Women’s International Shipping and Trading Association (WISTA), Singapore Chapter, with a ship tour at Sembawang Wharves, Singapore. About 20 members of WISTA toured fleet replenishment oiler USNS Tippecanoe while the ship was pier-side awaiting regularly scheduled maintenance. WISTA is a networking forum for female professionals involved in shipping, trading and related business within the maritime industry from diverse companies such as ship owners, trading houses, bunkering houses, shipbrokers, chartering, ship management, insurance, finance and legal.

February

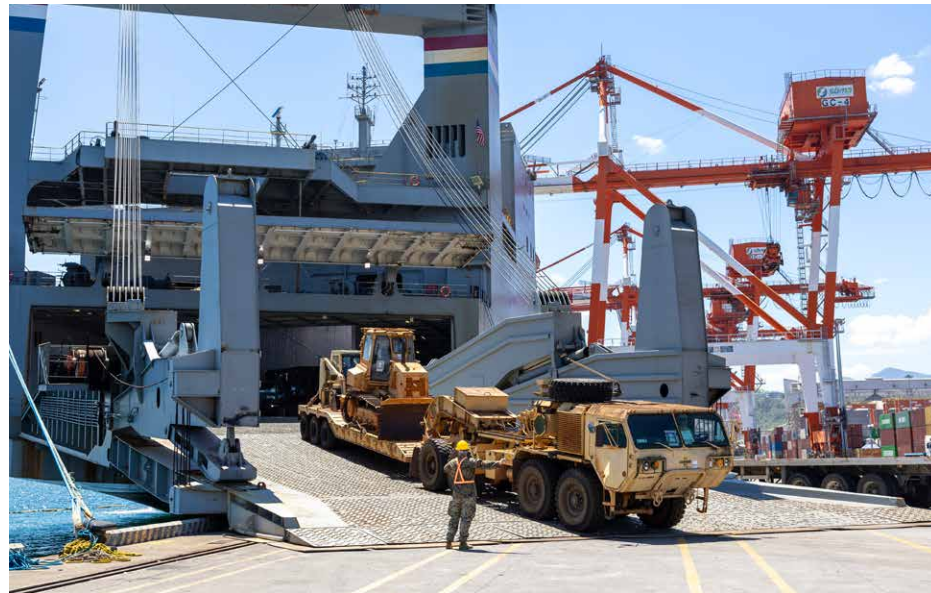
Sealift ship MV Cape Horn continued its voyage through the Pacific and arrived at Sattahip, Thailand, to offload equipment in support of exercise Cobra Gold 2024. The vessel began the voyage from its home port in San Francisco and took on cargo in Tacoma, Washington; Honolulu; Anchorage, Alaska, and Okinawa, Japan, prior to arrival. Thailand was the first point of discharge at the ports of Toong Prong and Sattahip, and the ship offloaded approximately 260 equipment items and containers in about three days. Cape Horn departed Thailand and sailed to its next port to offload more equipment for other missions.

MSC Far East visited a learning center of the Human Help Network Foundation to interact with children during a community outreach event in Pattaya, Thailand, during the 43rd iteration of the Cobra Gold exercise. The learning center is a non-governmental organization and hosts about 85 children a day from neighboring nations, whose parents are day laborers in the Kingdom of Thailand. MSC Far East deployed a team of Reservists from various Expeditionary Port Units (EPU) in support of exercise Cobra Gold. The team was part of the Cobra Gold deploy detachment that assisted with the arrival of MSC chartered ship MV Cape Horn at Sattahip, Thailand, to offload equipment.



March

Soldiers with 2nd Battalion, 2nd Aviation Regiment, 2nd Combat Aviation Brigade (2-2 CAB) conducted deck landings (DLQs) with U.S. Army UH-60M Black Hawk helicopters on prepositioning ship USNS Dahl. Six aircraft crews from Assault Helicopter Battalion 2-2 CAB practiced single-spot deck landings aboard Dahl, about five miles off the coast of Jinhae, South Korea, to certify air crew members and pilots in landing on a ship. The DLQs were conducted through coordination between MSC Office-Korea, Dahl, and crews from Assault Helicopter Battalion 2-2 CAB to qualify or reset their crew on single-spot DLQ currency.



A military vehicle is driven out of Military Sealift Command chartered ship MV Cape Horn (T-AKR 5068) during an offload for exercise Balikatan 2024 at the New Container Terminal, Subic Bay, Philippines, April 15. Balikatan is a longstanding annual exercise between the Armed Forces of the Philippines and the U.S. military designed to strengthen bilateral capabilities, interoperability, trust, and cooperation. (U.S. Navy photo by Grady T. Fontana)

is a local government facility that provides care and rehabilitation to young adults through counseling, guidance and education. The MSCFE team, composed of active-duty service members and reservists, was in the Philippines assisting in the offload of Cape Horn at Subic Bay Metropolitan Authority, Subic Bay, Philippines.

May

Members from fleet replenishment oiler USNS Yukon visited the Pattaya Elephant Sanctuary to help lay a foundation that will be a source of food for elephants, and to feed and play with the large residents, during a community outreach event in Pattaya, Thailand.

The commodore and team of Maritime Prepositioning Ships Squadron Three (MPSRON 3) met with recent maritime academy graduates on Saipan to provide an introduction to seafaring careers with MSC. Capt. Steven Wasson, Commodore of MPSRON 3, spoke with the recent graduating classes of Western Pacific Maritime Academy at Kagman High School, Marianas High School, and Da'ok Academy, many of whom aspire to become MSC CIVMARS. Wasson visited the academy at their respective high schools to share insight with the graduating classes of 2024 about jobs at MSC and the journey the students are about to undertake.

June

Capt. Aaron L. Helgerson relieved Capt. Nathan W. Fugate as Commander of Maritime Prepositioning Ship Squadron Two during a change of command ceremony at headquarters, U.S. Navy Support Facility Diego Garcia, June 10. Helgerson took the reins after a 14-month tenure by Fugate as the commodore of the squadron that is forward deployed to Diego Garcia.

July

MSC Ship Support Unit (SSU) in Guam transferred authority during a change of command ceremony at the base chapel aboard Naval Base Guam, July 12. In the ceremony, Cmdr. Kristopher M. Blandin assumed the helm from Cmdr. Omari D. Buckley for MSC SSU Guam, which is located at Naval Base Guam.



A staff member with Maritime Prepositioning Ships Squadron Three inspects recent graduates of Western Pacific Maritime Academy at Kagman High School, Marianas High School, and Da'ok Academy in Saipan, during a campus visit. (Navy photo by Lt. j. g. Jaden Trego)

April

Cape Horn arrived at the New Container Terminal in Subic Bay, Philippines, to offload equipment in support of exercise Balikatan 2024 (BK24).

Cape Horn transported equipment to support several theater security cooperation exercises with ally and partner militaries in the Indo-Pacific region. Within two days, the ship unloaded approximately 554 pieces of equipment and containers. The equipment discharged off Cape Horn supported two exercises in the Philippines, the joint and combined BK24, as well as a separate Army bilateral exercise with the Armed Forces of the Philippines.

Members of MSCFE visited the Center for Youth to share lunch and fellowship with young adults during a community relations event as part of BK24 at Olongapo City, Philippines. Olongapo City Center for Youth



Japan Maritime Self-Defense Force oiler JS Hamana (AO-424) connects its fuel line to Military Sealift Command's commercial charter oiler MT Badlands Trader during ships qualification training at sea West of Kyushu, Japan. (Courtesy photo)

Expeditionary fast transport ship USNS City of Bismarck arrived at the Port of Legazpi in preparation for the start of Pacific Partnership 2024-2 humanitarian mission in the Philippines.

Commercial charter Badlands Trader conducted SQTs with JMSDF oiler JS Hamana (AOE 424) in which the ships performed a CONSOL-at-sea west of Kyushu, Japan. The training evolution built upon a previous SQT between a U.S. Navy commercial oiler and a JMSDF oiler in October 2023.

Soldiers with 2-2 CAB conducted DLQs with U.S. Army UH-60M Black Hawk helicopters aboard dry cargo and ammunition ship USNS Sacagawea. The aircraft crews from Assault Helicopter Battalion 2-2 CAB practiced single-spot deck landings aboard Sacagawea, off the coast of Jinhae, South Korea, to certify nine crew members and 13 pilots in landing on a ship. The DLQs were conducted through coordination between MSC Office-Korea, Sacagawea, and crews from Assault Helicopter Battalion 2-2 CAB to qualify or reset their crew on single-spot DLQ currency.

August

Sealift ship MV Cape Hudson arrived at the port of Banyuwangi, Indonesia, to offload equipment in support of exercise Super Garuda Shield 2024. The vessel embarked on its voyage from its home port in San Francisco and made stops to load cargo and personnel in Tacoma, Washington, Honolulu, and Japan before arriving at Banyuwangi. Within two days, the ship unloaded approximately 313

pieces of equipment and containers. Once the items were discharged off the ship, they were staged at the marshalling area for onward movement to the respective training area.

City of Bismarck arrived in Quang Ngai, Vietnam, marking the beginning of the Vietnam mission stop for Pacific Partnership.

September

MSC reserve-component Sailors traveled to Pier 8, Busan, South Korea, and participated in exercise Ulchi Freedom Shield 2024 (UFS 24). The 11-person team of MSC Sailors were from Reserve unit MSC Far East Det. 101 out of St. Louis. During UFS 24, the MSCFE team monitored and directed all simulated MSC shipping traffic throughout the western Pacific. The scope of the training was both diverse and complex, managing many simulated U.S. government and commercially-contracted dry cargo ships and fuel tankers to and from the Korean area of operations.

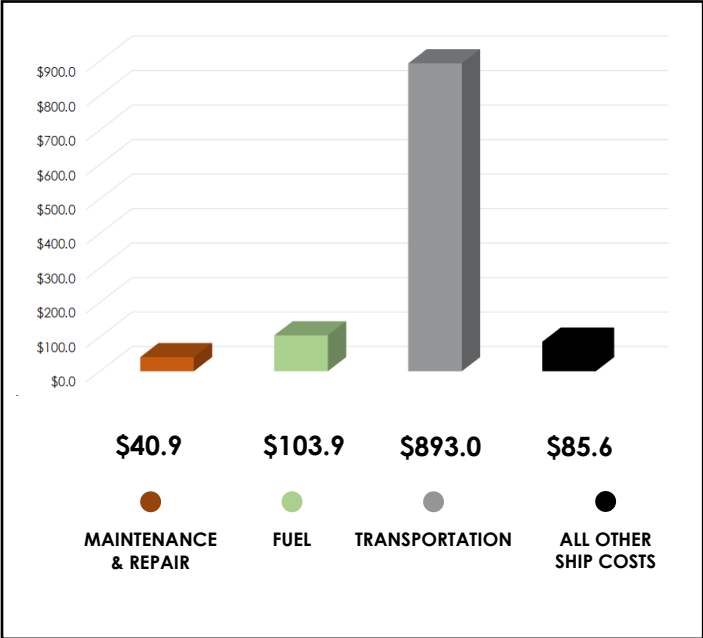


Pacific Partnership 2024-2 (PP24-2) staff pose for a photo with members of the Vietnam People's Armed Forces and government officials pier-side following the arrival of the expeditionary fast transport ship USNS City of Bismarck (T-EPF 9) and the PP24-2 team in Quang Ngai, Vietnam. (U.S. Navy photo by Mass Communication Specialist 1st Class Ryan D. McLearn)

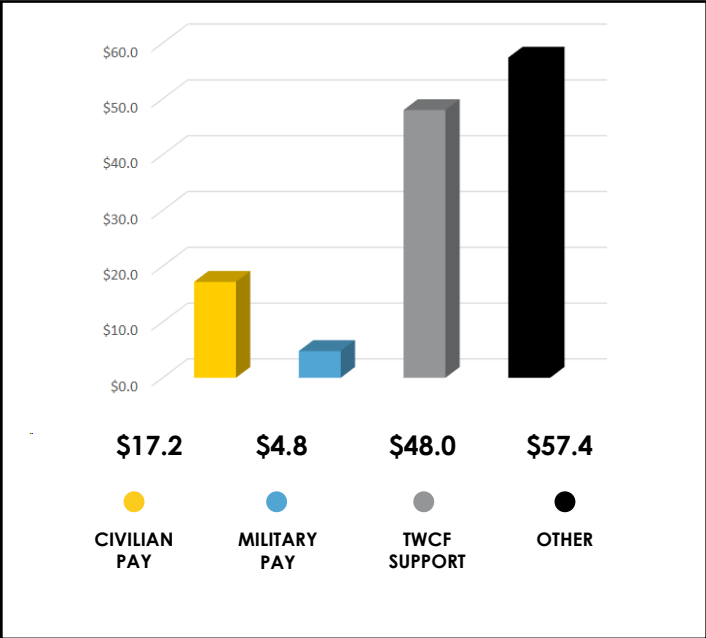
Expenses and Costs

UNITED WE SAIL

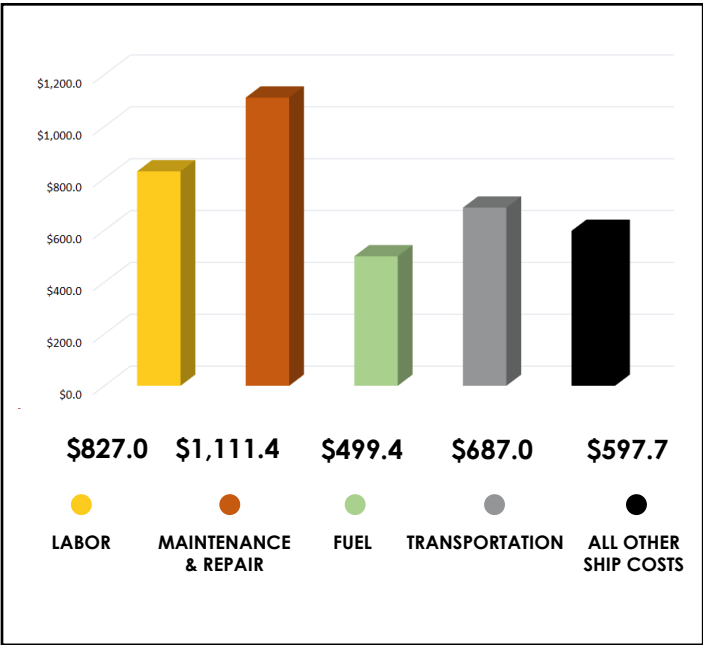
Transportation Working Capital Fund
FY 2024 Direct Costs (\$M)



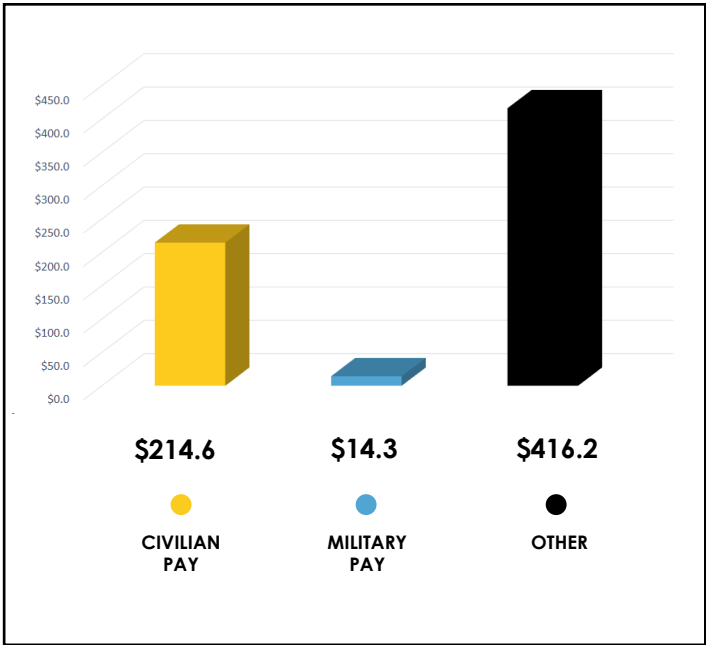
Transportation Working Capital Fund
FY 2024 Indirect Costs (\$M)



Navy Working Capital Fund
FY 2024 Direct Costs (\$M)



Navy Working Capital Fund
FY 2024 Indirect Costs (\$M)



Mission Highlights

msc.usf.navy.mil

Operation	MSC Ships	Location	Dates	Purpose
CLF Support to CSG During Combat Operations	USNS Supply USNS Kanawha	Red Sea and surrounding waters	Oct 23 - Jul 24	Combat logistics support to USS Dwight D. Eisenhower Carrier Strike Group
Command Ship Deployment	USS Mount Whitney	Eastern Mediterranean Sea	Oct - Dec 24	Support of U.S. operations in the Eastern Mediterranean Sea
Continuing Promise 23	USNS Burlington	Panama, Columbia, Trinidad and Tobago, Grenada	Oct 23	Humanitarian assistance, medical care, and goodwill mission
Continuing Promise 24	USNS Burlington	Jamaica, Costa Rica, Honduras, Columbia, Panama	Jul - Aug 24	Humanitarian assistance, medical care, and goodwill mission
Humanitarian Assistance Support at Gaza Pier	MV Roy P. Benavidez USNS 1ST LT Baldomero Lopez USNS GYSGT Fred W. Stockham	Eastern Mediterranean Sea	Mar - Jul 24	Movement of food from ships to shore via trucks using temporary piers and logistics vessels
Joint Logistics-Over-the-Shore Mission	MV Roy P. Benavidez	Newport News, Virginia Eastern Mediterranean Sea	Mar - Aug 24	Loadout, movement and assembly of JLOTS capability to construct temporary pier in support of flow of humanitarian aid into Gaza
Operation Deep Freeze	MV Ocean Gladiator MT Acadia Trader	San Diego and Antarctica	Dec 23 - Mar 24	Cargo and fuel resupply to the research station
Operation Pacer Goose	MV Ocean Gladiator MT Stena Polaris	Thule Air Base, Greenland	June - Aug 24	Cargo and fuel resupply of Thule Air Base
Operation Pathways	MV Cape Horn MV Cape Hudson	Thailand, Philippines, Indonesia, Japan	Jan - Sep 24	U.S. Army Pacific Command's annual operation involving thousands of Army forces rehearsing strategic movement, operational maneuver, and tactical employment of land forces throughout the Pacific
Pacific Partnership 24-1	USNS Mercy	Republic of the Marshall Islands, Solomon Islands, Palau, Federated States of Micronesia	Oct 23 - Feb 24	Multilateral humanitarian assistance and disaster relief preparedness exercise
Pacific Partnership 24-2	USNS City of Bismarck	Philippines, Vietnam	Aug - Sep 24	Multilateral humanitarian assistance and disaster relief preparedness exercise
Port Visit	USS Hershel "Woody" Williams	Tema, Ghana	Oct 23	Port visit to onload supplies and conduct routine maintenance at a port in Africa
Red Hill Bulk Fuel Storage Facility Defuel	MT Empire State MT Torm Thunder MT Stena Impeccable MT Stena Imperative MT Overseas Suncoast MT Torm Timothy	Oahu, Hawaii	Oct 23 - Jan 24	Defuel of fuel storage facility
Rotation of U.S. Army Equipment	MV Ocean Giant	Portugal	Dec 23	Movement of U.S. Army equipment from eastern Europe to U.S. through a port in Portugal
Salvage Operation	USNS Salvor	Weno Harbor, Chuuk, Micronesia	Oct 23	Removal and disposal of vessel blocking harbor and pier
San Francisco Port Visit	USNS Harvey Milk	San Francisco	Mar 24	Ship visit and namesake recognition community event
SECNAV Visit	USNS Mercy	San Diego	Feb 24	Secretary of the Navy visit to USNS Mercy and Medical Treatment Facility staff
Ship seizure support	USS Lewis B. Puller	Off the coast of Somalia	Jan 24	Support to U.S. forces conducting a seizure of ship conducting illegal transport of lethal aid
Ship Tow	USNS Grasp	San Diego to Bremerton	Oct 23	Tow of decommissioned cruiser to Naval Inactive Ship Maintenance Facility
SSN Maintenance Availability	USS Emory S. Land	Western Australia	Aug 24	Submarine tender and personnel from U.S. and Australia conduct maintenance on USS Hawaii in Australia
Vertical Launch System Reload	MV Ocean Valor	San Diego	Oct 23	DDG VLS reloading from an off-shore support vessel

Exercise Participation

UNITED WE SAIL

Operation	MSC Ships	Location	Dates	Purpose
Balikatan	MV Cape Horn	Subic Bay, Philippines	Apr - May 24	Philippines-led annual command post and field training exercise
Carrier Strike Group pre-deployment training and exercise	USNS Pecos	Off the coast of Southern California	Apr 24	USS Abraham Lincoln Carrier Strike Group pre-deployment training and exercise
Cobra Gold	MV Cape Horn	Sattahip, Thailand	Feb - Apr 24	Equipment offload to support annual U.S. - Thai co-sponsored exercise that builds on the longstanding friendship between the two nations and brings together a robust multinational force to promote regional peace and security in support of a free and open Indo-Pacific
Deck Landing Qualifications	USNS Dahl	Off the coast of Jinhae, South Korea	Mar 24	Deck landing training with U.S. Army UH-60M Black Hawk helicopters with 2nd Battalion, 2nd Aviation Regiment, 2nd Combat Aviation Brigade (2-2 CAB)
Maritime Training Activity Sama Sama	USNS Wally Schirra	Manila, Philippines	Oct 23	Shore-based training in medicine, legal, engineering, and logistics, and sea-based training focused on anti-submarine, surface and air warfare, and maritime domain awareness
Noble Raven	USS Miguel Keith	East China Sea	May 24	Trilateral drills with Japan Self-Defense Force and the Royal New Zealand Air Force
Noble Shield	USNS William McLean	Mediterranean Sea	Dec 23	Replenishment-at-sea with Italian frigates
Obangame Express	USS Hershel "Woody" Williams	Libreville, Gabon	May 24	Thirty-nation exercise that included Visit, Board, Search, and Seizure, Unmanned Surface Vehicle launches and recoveries, and personnel exchange training evolutions
Rim of the Pacific	USNS Pecos USNS Washington Chambers USNS Grasp MT Overseas Mykonos MT Allied Pacific	In and around the Hawaiian Islands and Southern California	Jul 24	International maritime exercise
Sea Lion	USS Hershel "Woody" Williams	Gulf of Guinea	Mar 24	Maritime skills and personnel exchange while at sea with partner nations
Southern Seas	USNS John Lenthall	Areas off coasts of South America	Apr - Jun 24	Conduct passing exercises and operations at sea with partner nation maritime forces as ships circumnavigate the continent of South America
Super Garuda Shield	MV Cape Hudson	Banyuwangi, Indonesia	Aug - Sep 24	Multinational exercise in the Indo-Pacific region to solidify the U.S.-Indonesia defense cooperation agreement and advances cooperation in support of a free and open region



RISE TO THE CHALLENGE

THE RIGHT OPPORTUNITIES. THE RIGHT TIME.

Now is your chance to embrace the challenge and endless opportunities of a new career as a civil service mariner. You'll serve your country. Test your limits. Inspire your shipmates. It's time to Take Command of Your Career.®



CAREER ADVANCEMENT

JOB SECURITY

FLEXIBLE SCHEDULES*

FEDERAL BENEFITS

ACTIVELY HIRING:

- 1st Officer • 2nd Officer • 3rd Officer • Able Seaman
- 1st Assistant Engineer • 2nd Assistant Engineer • 3rd Assistant Engineer
- Refrigeration Engineer • Deck Engineer Machinist • Pumpman
- Unlicensed Junior Engineer • Electrician • Electronics Technician
- Chief Steward • Chief Cook • Second Cook • Cook Baker

*Looking for a better work life balance? Visit us online to learn more about our Mixed Work Schedule positions.



MSC is an equal opportunity employer and a drug-free workplace.

UNITED WE SAIL

Military Sealift Command

Awards

MSC Afloat Sailor of the Year for FY 2024

LS1 (SW) Phoenix Y. Jenkins, MSC Okinawa

MSC Shore Sailor of the Year for FY 2024

YN1 (SW/IW) Kiana J. Pitts, N14

FY 2024 Civilian of the Year

Junior COY: Tracy Trickett, N00L

Senior COY: Daryl Adamson, MSCFE

CY 2023 OSD Financial Management Award for Contributions to Financial Management in a Contingency Operation

David Bassett, N8

Stan Stanfield, N8

Gina Griego, N8

Jennifer Johnson, N8

Faith Bailey, N8

Theodore Smith, N8

FY 2023 Secretary of the Navy Energy Excellence Award

USNS Joshua Humphreys (T-AO 188), afloat, logistics

CY23 Navy Public Affairs Awards

Navy Civilian Videographer of the Year

Ryan Carter

2023 Captain David M. Cook Food Service Excellence Award

USNS Grasp (T-ARS 51), small afloat

USNS Joshua Humphreys (T-AO 188), medium afloat

USNS William McLean (T-AKE 4), large afloat

USS Mount Whitney (LCC 20), hybrid afloat

Chief Steward Jake Meyers, center, accepted the Captain David M. Cook award for USS Mount Whitney’s food service team. Standing alongside Meyers are Matthew Sweeney (left), Deputy Director MSC Logistics, and Robert Hein, MSC Director of Maritime Operations. (U.S. Navy photo by Ryan Carter)

Military Sealift Command

Awards

United Seamen’s Service Honored Seafarers Award

Crew of USNS Brunswick (T-EPF 6)

Merchant Marine Medal for Outstanding Achievement

Crew of USNS Brunswick (T-EPF 6)

Operation Oaken Soundstage

(Evacuation of personnel from Sudan to Saudi Arabia)

Christopher Jackson

Shane Twiddy

George Bradford

Bruce Donald Park

Nicholas Rossi

Keenan Clark

Mohamed Kassem

Ryan Tierney

Mathieu Zamora

Gregory Bassett

Daniel Marks

Daniel Anderson

Brandon Garbutt

Donald Hill

Arthur Heart

James Braunger

Daryl Eason

Victor Moreira

Thomas Shimizu

Kekoa Keith Kramer

Bruce Johnson

Noah Delaney Dance

Kendell Foreman

Nathan Wright

Navy Meritorious Civilian Service Award

James Locher, N02

Norman Capshaw, N9

Christine McMurdo, N00L

Allison Waterfield, N00L

Glen Wright, N02

Peter Lenardson, USNS Supply (T-AOE 6)

Andrew Lindey, USNS Supply (T-AOE 6)

Elizabeth Pingree, USNS Supply (T-AOE 6)

Stuart Belt, N00L

William McCarthy, N12

Alena Lytle, N12

Military Sealift Command

Awards

Navy Civilian Service Commendation Award

Cynthia Watts, N02

Anita McLean, N02

Elizabeth Trahadias, N9

Michael Daves, N9

Scott Flanagan, USNS Amelia Earhard (T-AKE 6)

Tracy Trickett, N00L

Daryl Adamson, N04

Nicholas Agati, USNS Supply (T-AOE 6)

Austin DeMeritt, USNS Supply (T-AOE 6)

Zachary Ferguson, USNS Supply (T-AOE 6)

Randolf Sanchez, USNS Supply (T-AOE 6)

Frankie Vasquez, USNS Supply (T-AOE 6)

Navy Civilian Service Achievement Award

Amy Wolf, N9

Son Le, N9

Theresa Aranas, N04

Tanya Delpriore, N9

Willie Satterthwaite, N6

Angela Waller, N03

Queen Love Abdalah-Lassiter, USNS Supply (T-AOE 6)

James Bailey, USNS Supply (T-AOE 6)

Ormando Cooper, USNS Supply (T-AOE 6)

Anthony Critten, USNS Supply (T-AOE 6)

Dominador Enciso, USNS Supply (T-AOE 6)

Robert King, USNS Supply (T-AOE 6)

William Leclair, USNS Supply (T-AOE 6)

Daniel Leong, USNS Supply (T-AOE 6)

Military Sealift Command

Awards

Legion of Merit

CAPT Rory Linehan

CAPT William Booth II

CAPT Nathan Fugate

CAPT Steven Wasson

CAPT Matthew Music

CAPT Michael Gomes

CAPT Jeffrey Feinberg

CAPT Vicente Garcia

Meritorious Service Medal

CDR Kevin Witte-Hunt

CDR Steffan Yesko

CDR William Feaster

CDR Kathleen Gilpin

ITCS Tina Rivera

CAPT Ralp Hulbert, Jr.

CDR Martha Adams

CWO Chistina Flores

CDR Jaime Vega

CAPT Raul Carrillo

CDR Jason Afong

CMDCM Lynita King

CMDCM Michael Pesicka

LCDR Jaypee Punzal

OSCM Sunrise Nisperos

LCDR Christian Mack

CDR Andrew Brown

LCDR Francisco Samalot Roque

HMC Paul Reyes

52

MILITARY SEALIFT COMMAND 2024 IN REVIEW

MILITARY SEALIFT COMMAND 2024 IN REVIEW

53

Awards

Navy Commendation Medal



- NCC Xavier Tirciovera
- YN1 Luis Bermudez
- LCDR Chad Griffin
- YN1 Jason Stewart
- LT Merlin Suggs
- LCDR Daniel Cline
- LCDR Caitlin Smith
- LT Myer Krah
- CDR Sean Murphy
- LCDR Sean Walgrave
- LT Vicky Fam
- QMC Timothy Miller
- LCDR Makenzie Maley
- LCDR Jason Berger
- LT Kyanee McAllister
- YNC Britany Woodman
- LT Kate Siepert
- LT Vera Dove
- LCDR Justin Henigan
- LCDR Victoria Cooper
- LT Aaron Aldrige
- LCDR Arielle Griffin
- LT Michelle Danhof
- LT Madison Stenzel
- YN1 Kiana Pitts
- YNC John Provins



Navy Achievement Medal



- CS2 Kirra Tipton
- DC3 Mariah Mulliner
- OS2 Daniela Marin
- OS1 Odessie Peters
- YN1 Nicholas Wimpee
- IT2 Wyatt Johnson
- LS3 Aaron Estrada
- LT Peter Barrow
- SGT Ryan Harper
- OS2 Corbin Zanick
- OS2 Anfernee Burke
- LT Garret Hargis
- LTJG Tamer Perry
- LT Andrew Harmon

Flag Letter of Commendation

- MA2 Cing San Nuam
- CS3 Amber Rachielug



LEFT: Navy Chief Petty Officer Britany Woodman receives an award from MSC Chief of Staff CAPT Daniel Broadhurst. Right: Ernest Bell, PM6 Fleet ET liaison officer, receives an award for 30 years of federal service from Steven Cade, MSC Executive Director. Both were recognized at the command's monthly awards and birthday recognition event.

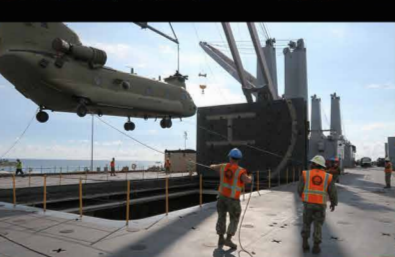
Personnel

FY 2024 In Review Personnel

- Civil Service Mariners: 5,507
- Civil Service (Ashore): 1,441
- Military Personnel (Active Duty and Reserves): 1,208
- Contract Mariners: 1,500



Military Sealift Command Civil Service Mariner Joe Marges, assigned to the forward-deployed U.S. Navy submarine tender USS Frank Cable (AS 40), wraps lines around a capstan as the ship arrives in Sasebo. Frank Cable, forward-deployed to the island of Guam, repairs, rearms, and re-provisions submarines and surface vessels in the Indo-Pacific region. (U.S. Navy photo by Mass Communication Specialist 2nd Class Wendy Arauz)





Military Sealift Command
471 East C Street
Norfolk, VA 23511

msc.usff.navy.mil

UNITED WE SAIL